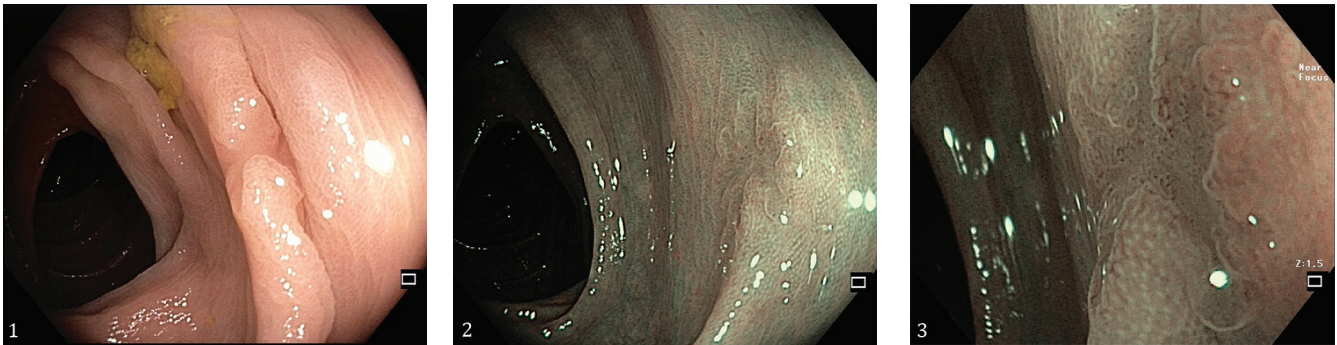


A Starfish-like Ultra-flat Colorectal Adenoma treated by Tip-in Mucosectomy: A Variant of the “Valley Sign”?

Vincent Zimmer

Department of Medicine, Knappschaftsklinikum Saar GmbH, Püttlingen; Department of Medicine II, Saarland University Medical Center, Saarland University, Homburg, Germany



A 67-year-old male patient was referred for colonoscopy to assess for completeness of and potential re-resection of a piecemeal endoscopic mucosal resection (pEMR) at the left flexure of a 20-mm high-grade dysplasia performed elsewhere on an outpatient basis. While provisions were made for device-assisted full-thickness resection, no recurrence or rather persistence was detected on the scar as confirmed by ancillary biopsies. However, more proximal in the transverse colon a clefted lesion emerged over a fold with a more reddened centre (Fig 1). More close-up views on near-focus narrow-band imaging (NBI) demonstrated an amorphous surface and altered vessel pattern indicated by condensed brownish spots, suggesting a neoplastic colorectal lesion (Supplementary file). After air insufflation with flattening of the underlying fold, the ultra-flat lesion assumed a starfish-like appearance on conventional panorama NBI visualization (Fig. 2). This was more markedly exhibited on close-up near-focus NBI, highlighting the discretely sloping peripheral edges (Fig. 3). Given the flatness of the lesion, we opted for tip-in mucosectomy after submucosal indigocarmine injection. Final histopathology confirmed R0 resection of a low-grade intraepithelial neoplasia.

This unique pattern of an ultra-flat diminutive colorectal polyp is reminiscent of the “valley sign” introduced as a predictor of low-grade adenomas by the working group of Douglas Rex, thus, the “starfish sign” might be suggested as a variant of the former [1].

Corresponding author: Vincent Zimmer,
vincent.zimmer@gmx.de

Conflicts of interest: None to declare.

Supplementary material: To access the supplementary material visit the online version of the *J Gastrointestin Liver Dis* at <http://dx.doi.org/10.15403/jgld-5034>

REFERENCES

1. Rex DK, Ponugoti P, Kahi C. The „valley sign“ in small and diminutive adenomas: prevalence, interobserver agreement, and validation as an adenoma marker. *Gastrointest Endosc* 2017;85:614-621. doi:[10.1016/j.gie.2016.10.011](https://doi.org/10.1016/j.gie.2016.10.011)