

IMAGE OPEN

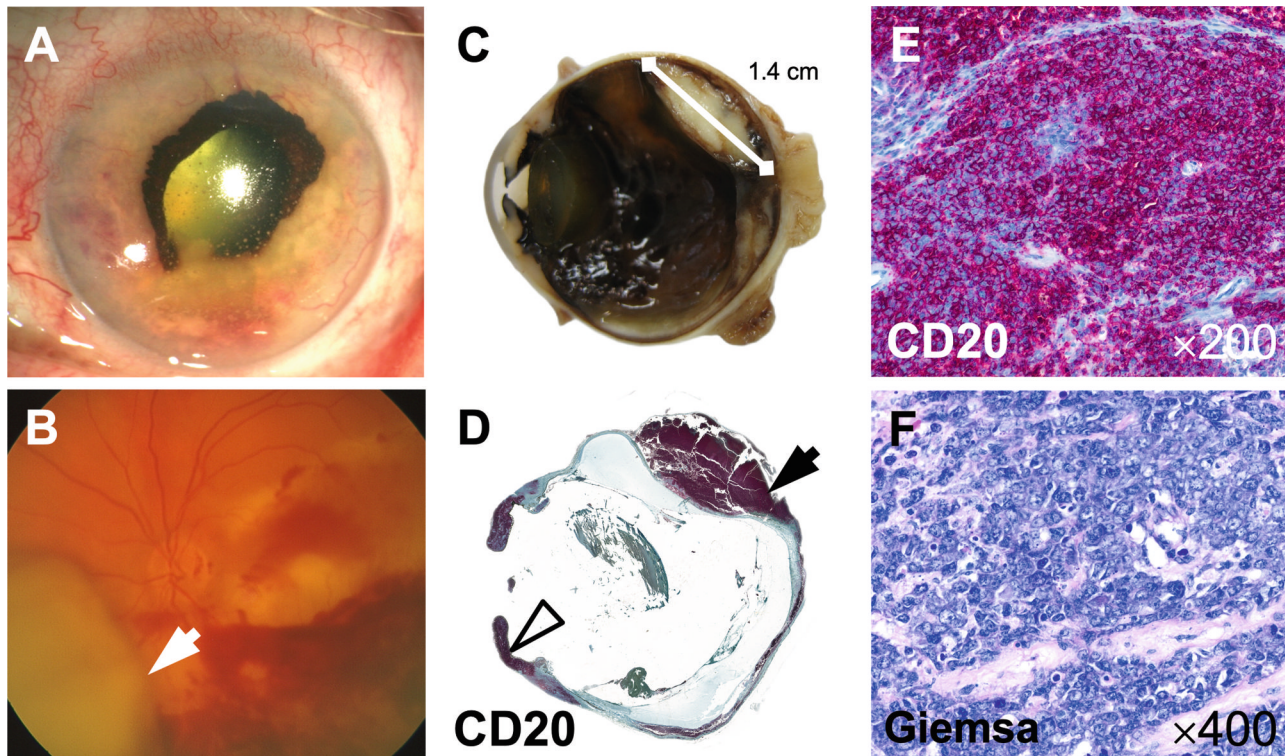


# Intraocular manifestation of a diffuse large B-cell non-Hodgkin lymphoma of the pancreas

Colya N. Englisch<sup>1,2</sup>, Tim Berger<sup>1</sup>, Fidelis Flockerzi<sup>3</sup>, Andrea Hasenfus<sup>3</sup> and Berthold Seitz<sup>1</sup>

© The Author(s) 2024

Eye; <https://doi.org/10.1038/s41433-024-03259-y>



**Fig. 1 Clinical and histopathologic findings of a bulbar enucleate with intraocular manifestation of a diffuse large B-cell non-Hodgkin lymphoma of the pancreas.** The anterior segment of the eye shows granulomatous corneal precipitates, fibrin exudate in the anterior chamber, and a massive rubeosis iridis with ectropion uveae (A). Funduscopy findings include a nasal, prominent, grayish mass (arrow) and marked retinal hemorrhages with whitish retinal infiltrates (B). The largest mass measured  $1.4 \times 1.2 \times 0.5$  cm and extended from anteronasal to posterotemporal (C). The histologic overview image (D, CD20-immunohistochemistry) shows extensive lymphoma manifestations in almost the complete retina and choroid, the ciliary body, and the iris (arrowhead). The lesion highlighted in (C) is marked with an arrow in (D). Higher magnifications display infiltrates of medium to large blastic tumor cells with loosened nuclear chromatin, prominent nucleoli, and mitotic figures (E: CD20-immunohistochemistry, F: Giemsa staining).

## AUTHOR CONTRIBUTIONS

Writing—original draft: CNE; Writing—reviewing and editing: TB, FF, AH, and BS; Visualization: CNE, TB, FF, and AH; Resources: BS.

## COMPETING INTERESTS

The authors declare no competing interests.

## FUNDING

Open Access funding enabled and organized by Projekt DEAL.

## ADDITIONAL INFORMATION

**Correspondence** and requests for materials should be addressed to Colya N. Englisch.

<sup>1</sup>Department of Ophthalmology, Saarland University Medical Center, Homburg/Saar, Germany. <sup>2</sup>Department of Experimental Ophthalmology, Saarland University, Homburg/Saar, Germany. <sup>3</sup>Institute of Pathology, Saarland University Medical Center, Homburg/Saar, Germany. ✉email: [colya.englich@uni-saarland.de](mailto:colya.englich@uni-saarland.de)

Received: 19 June 2024 Revised: 24 June 2024 Accepted: 15 July 2024  
Published online: 22 July 2024

**Reprints and permission information** is available at <http://www.nature.com/reprints>

**Publisher's note** Springer Nature remains neutral with regard to jurisdictional claims in published maps and institutional affiliations.



**Open Access** This article is licensed under a Creative Commons Attribution 4.0 International License, which permits use, sharing, adaptation, distribution and reproduction in any medium or format, as long as you give appropriate credit to the original author(s) and the source, provide a link to the Creative

Commons licence, and indicate if changes were made. The images or other third party material in this article are included in the article's Creative Commons licence, unless indicated otherwise in a credit line to the material. If material is not included in the article's Creative Commons licence and your intended use is not permitted by statutory regulation or exceeds the permitted use, you will need to obtain permission directly from the copyright holder. To view a copy of this licence, visit <http://creativecommons.org/licenses/by/4.0/>.

© The Author(s) 2024