

Review

# Ca<sup>2+</sup> Microdomains, Calcineurin and the Regulation of Gene Transcription

Gerald Thiel \*, Tobias Schmidt † and Oliver G. Rössler

Department of Medical Biochemistry and Molecular Biology, Saarland University Medical Faculty, D-66421 Homburg, Germany; Schmidttobias190@gmail.com (T.S.); oliver.roessler@uks.eu (O.G.R.)

\* Correspondence: gerald.thiel@uks.eu

† Current address: Knappschaftsklinikum Sulzbach, Clinic of Internal Medicine, D-66280 Sulzbach, Germany.

**Abstract:** Ca<sup>2+</sup> ions function as second messengers regulating many intracellular events, including neurotransmitter release, exocytosis, muscle contraction, metabolism and gene transcription. Cells of a multicellular organism express a variety of cell-surface receptors and channels that trigger an increase of the intracellular Ca<sup>2+</sup> concentration upon stimulation. The elevated Ca<sup>2+</sup> concentration is not uniformly distributed within the cytoplasm but is organized in subcellular microdomains with high and low concentrations of Ca<sup>2+</sup> at different locations in the cell. Ca<sup>2+</sup> ions are stored and released by intracellular organelles that change the concentration and distribution of Ca<sup>2+</sup> ions. A major function of the rise in intracellular Ca<sup>2+</sup> is the change of the genetic expression pattern of the cell via the activation of Ca<sup>2+</sup>-responsive transcription factors. It has been proposed that Ca<sup>2+</sup>-responsive transcription factors are differently affected by a rise in cytoplasmic versus nuclear Ca<sup>2+</sup>. Moreover, it has been suggested that the mode of entry determines whether an influx of Ca<sup>2+</sup> leads to the stimulation of gene transcription. A rise in cytoplasmic Ca<sup>2+</sup> induces an intracellular signaling cascade, involving the activation of the Ca<sup>2+</sup>/calmodulin-dependent protein phosphatase calcineurin and various protein kinases (protein kinase C, extracellular signal-regulated protein kinase, Ca<sup>2+</sup>/calmodulin-dependent protein kinases). In this review article, we discuss the concept of gene regulation via elevated Ca<sup>2+</sup> concentration in the cytoplasm and the nucleus, the role of Ca<sup>2+</sup> entry and the role of enzymes as signal transducers. We give particular emphasis to the regulation of gene transcription by calcineurin, linking protein dephosphorylation with Ca<sup>2+</sup> signaling and gene expression.

**Keywords:** Ca<sup>2+</sup> microdomains; Ca<sup>2+</sup> channel; calcineurin; CREB; Elk-1; NFAT; TRPM3



**Citation:** Thiel, G.; Schmidt, T.; Rössler, O.G. Ca<sup>2+</sup> Microdomains, Calcineurin and the Regulation of Gene Transcription. *Cells* **2021**, *10*, 875. <https://doi.org/10.3390/cells10040875>

Academic Editor: Alexander E. Kalyuzhny

Received: 2 March 2021

Accepted: 9 April 2021

Published: 12 April 2021

**Publisher's Note:** MDPI stays neutral with regard to jurisdictional claims in published maps and institutional affiliations.

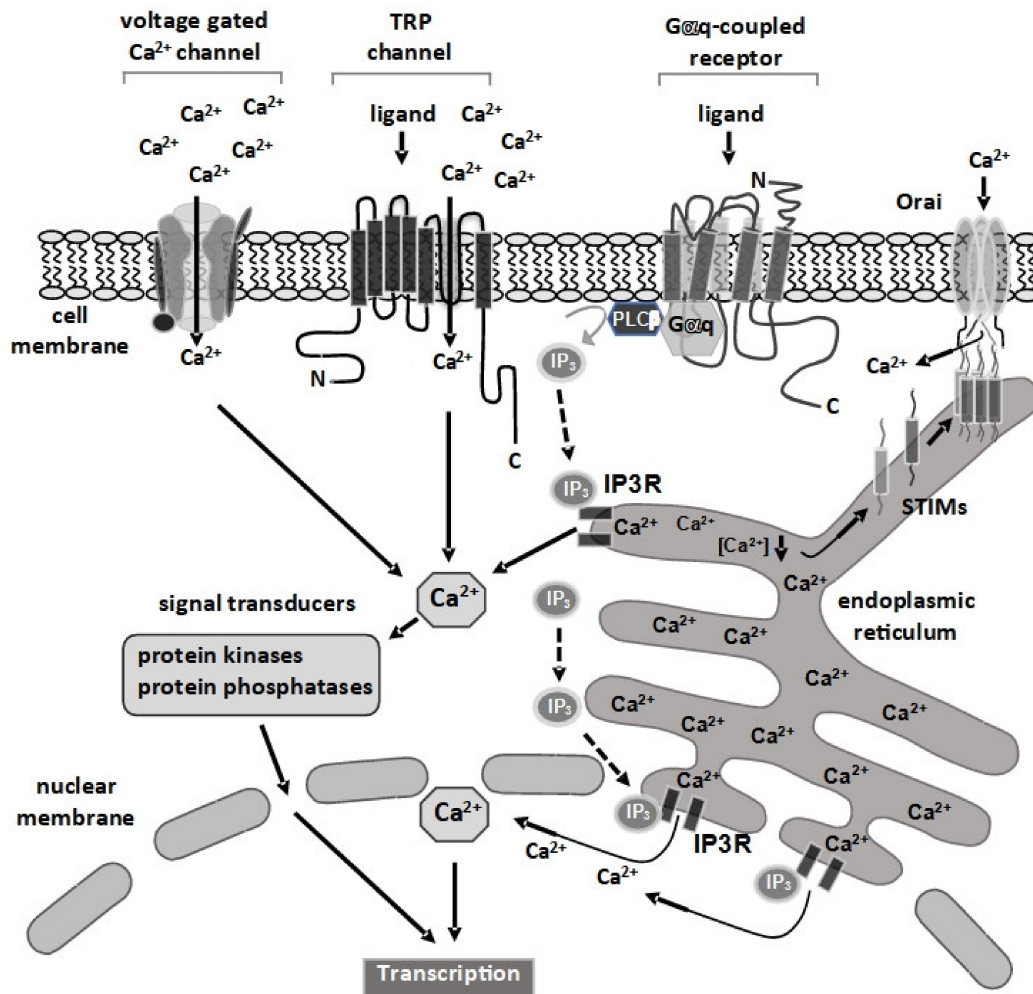


**Copyright:** © 2021 by the authors. Licensee MDPI, Basel, Switzerland. This article is an open access article distributed under the terms and conditions of the Creative Commons Attribution (CC BY) license (<https://creativecommons.org/licenses/by/4.0/>).

## 1. Introduction

Cells express a variety of surface receptors and ion channels that regulate intracellular Ca<sup>2+</sup> ion concentration. At rest, the intracellular cytosolic Ca<sup>2+</sup> concentration is estimated to be at 100 nM while the extracellular milieu has a Ca<sup>2+</sup> concentration of approximately 1 mM. Thus, opening of voltage-gated or ligand-gated Ca<sup>2+</sup> channels in the plasma membrane leads to an influx of Ca<sup>2+</sup> ions into the cell. In addition, stimulation of Gαq-coupled receptors triggers the activation of intracellularly located IP<sub>3</sub> receptors and results in an influx of Ca<sup>2+</sup> ions from the endoplasmic reticulum into the cytosol (Figure 1). This drop in the Ca<sup>2+</sup> concentration of the endoplasmic reticulum is sensed by the STIM proteins of the endoplasmic reticulum. They oligomerize and contact Orai Ca<sup>2+</sup> channels of the plasma membrane, leading to an influx of Ca<sup>2+</sup> ions from the outside into the cell. This scenario is known as store-operated Ca<sup>2+</sup> entry (SOCE). Even lysosomes, often viewed as a “terminal end” of intracellular pathways, are involved in intracellular Ca<sup>2+</sup> signaling [1]. Ca<sup>2+</sup> ions are second messengers and activate various Ca<sup>2+</sup>-responsive protein kinases and calcineurin, a Ca<sup>2+</sup>/calmodulin-dependent protein phosphatase, in the cytosol. These enzymes function as signal transducers for propagating the Ca<sup>2+</sup> signal from the cytosol into the nucleus. Amplitude, duration and subcellular localization of Ca<sup>2+</sup> signals can differ depending

on the nature of the receptor or channel and these  $\text{Ca}^{2+}$  signals can be modified by  $\text{Ca}^{2+}$ -accumulating and  $\text{Ca}^{2+}$ -releasing organelles,  $\text{Ca}^{2+}$  pumps and  $\text{Ca}^{2+}$  exchangers.



**Figure 1.** Stimulation of cell surface receptors and channels increases the intracellular  $\text{Ca}^{2+}$  concentration. Cells express a variety of  $\text{Ca}^{2+}$  channels at the plasma membrane, including voltage-gated  $\text{Ca}^{2+}$  channels and ligand-regulated TRP channels. Stimulation of  $\text{G}\alpha\text{q}$ -coupled receptors activates phospholipase  $\text{C}\beta$ , leading to the generation of inositol-1,4,5-trisphosphate ( $\text{IP}_3$ ) and diacylglycerol.  $\text{IP}_3$  is a ligand for the ionotropic  $\text{IP}_3$  receptor, located in the membrane of the endoplasmic reticulum (ER), and binding triggers the influx of  $\text{Ca}^{2+}$  from the ER store into the cytosol. The depletion of the  $\text{Ca}^{2+}$  store of the ER is detected by the STIM proteins,  $\text{Ca}^{2+}$  sensor proteins, that oligomerize and connect with the plasma membrane located Orai  $\text{Ca}^{2+}$  channels. As a result,  $\text{Ca}^{2+}$  ions flow into the cell. Since the ER is contiguous with the outer nuclear membrane, it has been proposed that  $\text{IP}_3$  receptors are also expressed in the inner nuclear membrane, facing the nucleoplasm, and their presence allows the release of  $\text{Ca}^{2+}$  directly into the nucleoplasm.  $\text{Ca}^{2+}$  ions are second messengers that activate a variety of enzymes in the cytosol, including protein kinases and phosphatases that function as signal transducers. The information is transferred into the nucleus and triggers a change of gene transcription by activating stimulus-responsive transcription factors.  $\text{Ca}^{2+}$  ions may also diffuse into the nucleus to regulate  $\text{Ca}^{2+}$ -responsive enzymes and transcription factors.

## 2. Signal Transducers Required for $\text{Ca}^{2+}$ -Induced Signaling from the Plasma Membrane to the Nucleus

A rise in intracellular  $\text{Ca}^{2+}$  leads to the activation of signal transducers that propagate the  $\text{Ca}^{2+}$  signal into the nucleus, as depicted in Figure 1. The activation of the mitogen-activated protein (MAP) kinase extracellular signal-regulated protein kinase (ERK1/2) is well studied. MAP kinases, a group of structurally related serine/threonine protein kinases,

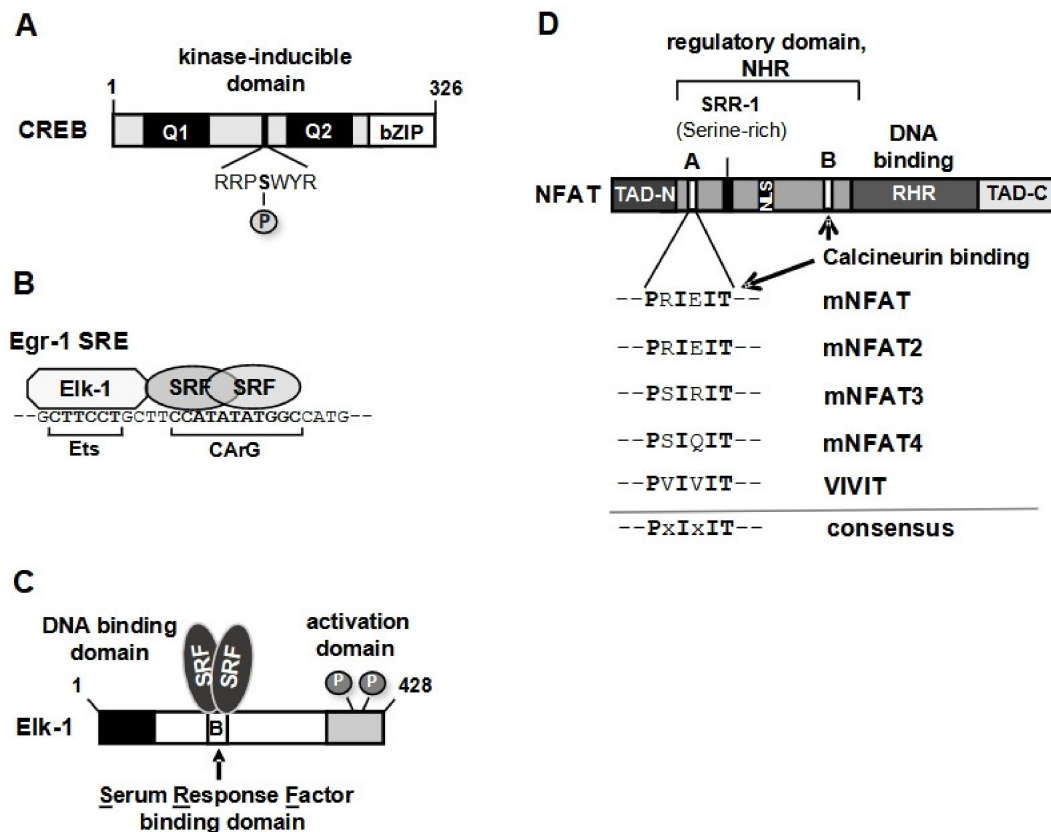
are activated by many extracellular signaling molecules including mitogens, growth factors, cytokines, metabolites, ligands of G protein-coupled receptors and  $\text{Ca}^{2+}$  ions. MAP kinases are part of a phosphorylation signaling cascade involving two upstream kinases called MAP kinase kinase (or MAP2 kinase) and MAP kinase kinase kinase (or MAP3 kinase) [2]. ERK1/2 is activated by a rise in intracellular  $\text{Ca}^{2+}$  [3–11], most likely involving the protein kinases PKC and Raf. The key role of ERK1/2 as a cytoplasmic signal transducer connecting a rise in cytoplasmic  $\text{Ca}^{2+}$  and the activation of gene transcription has been confirmed by pharmacological or genetic inhibition of the ERK1/2 signaling cascade [10,12–15], or overexpression experiments involving MAP kinase phosphatase-1 and DA-Raf-1 [8,9,16,17], a splice form of A-Raf that functions as a dominant negative inhibitor of Raf. The MAP kinases c-Jun N-terminal protein kinase (JNK) and p38 have also been identified as signal transducers [10,18,19]. These kinases are activated by growth factors and proinflammatory cytokines, but also by stress signals (oxidative stress, UV light). MAP kinases translocate into the nucleus upon phosphorylation and catalyze the phosphorylation of nuclear substrates, including  $\text{Ca}^{2+}$ -responsive transcription factors. A rise in cytoplasmic  $\text{Ca}^{2+}$  may also lead to an activation of  $\text{Ca}^{2+}$ /calmodulin-dependent protein kinases that phosphorylate and activate  $\text{Ca}^{2+}$ -responsive transcription factors [20,21]. Moreover, cytoplasmic  $\text{Ca}^{2+}$  ions are required to activate the  $\text{Ca}^{2+}$ /calmodulin-dependent phosphatase calcineurin that transduces the  $\text{Ca}^{2+}$  signal into the nucleus via dephosphorylation of cytoplasmic transcription factors.

It has been suggested that the route of  $\text{Ca}^{2+}$  entry, either via ligand- or voltage-gated  $\text{Ca}^{2+}$  channels, plays a key role in determining whether a particular transcription factor is activated or not [22]. We think that it is instead the amplitude and duration of  $\text{Ca}^{2+}$  signal, controlled by the expression levels of particular  $\text{Ca}^{2+}$  channels and the nature and concentration of the ligands, that are of major importance to  $\text{Ca}^{2+}$ -induced gene transcription. Stimulation of the cation channel TRPM3 by either pregnenolone sulfate or nifedipine leads to an increase in cytoplasmic  $\text{Ca}^{2+}$ , as measured by fluorometric  $\text{Ca}^{2+}$  imaging [23]. However, only stimulation with pregnenolone sulfate triggered  $\text{Ca}^{2+}$ -dependent activation of gene transcription [24], indicating that  $\text{Ca}^{2+}$  influx into the cells alone does not necessarily lead to a  $\text{Ca}^{2+}$ -dependent change in gene transcription. Regulation of gene transcription has been shown to require sustained  $\text{Ca}^{2+}$  signals, whereas transient  $\text{Ca}^{2+}$  signals may be insufficient to trigger transcriptional responses [25]. In addition,  $\text{Ca}^{2+}$ -responsive transcription factors have different sensitivities to  $\text{Ca}^{2+}$  signals. Low levels of Orai channel stimulation led to an activation of nuclear factor of activated T-cells (NFAT), while c-Fos activation required increased stimulus intensity [26]. Likewise, the amplitude and the duration of  $\text{Ca}^{2+}$  signals controls whether NF- $\kappa$ B or NFAT transcription factors are activated in B lymphocytes. While NFAT1 is activated by a low, sustained  $\text{Ca}^{2+}$  plateau, activation of NF- $\kappa$ B requires a large transient  $\text{Ca}^{2+}$  rise [27]. Particular  $\text{Ca}^{2+}$  microdomains may be important to decide whether a  $\text{Ca}^{2+}$ -responsive transcription factor is activated or not. Nuclear translocation of NFAT1, for example, is tightly linked to the  $\text{Ca}^{2+}$  microdomain generated by the  $\text{Ca}^{2+}$  influx via Orai channels [28]. Sensitivity to  $\text{Ca}^{2+}$  signals can vary even within a family of transcription factors. Nuclear translocation of NFAT1 was shown to be more than 5-fold more sensitive to the stimulation of a  $\text{G}\alpha\text{q}$ -coupled receptor than NFAT4 [28]. In summary, regulation of gene transcription by  $\text{Ca}^{2+}$  is a “multi-modal system” [29], integrating a variety of signal transducers and transcription factors.

### 3. $\text{Ca}^{2+}$ -Responsive Transcription Factors

The stimulation of transcription as a result of elevated intracellular  $\text{Ca}^{2+}$  levels relies on the activation of  $\text{Ca}^{2+}$ -responsive transcription factors. CREB (cyclic AMP-response element (CRE)-binding protein) is the best-known transcription factor that is activated by elevated  $\text{Ca}^{2+}$  levels. CREB is a basic region-leucine zipper transcription factor with the leucine zipper domain functioning as the dimerization domain and the basic region as the DNA binding domain (Figure 2A). Originally discovered as a cAMP-responsive transcription factor that binds to the cyclic AMP-response element (CRE), CREB has been shown to be

activated by a rise in intracellular  $\text{Ca}^{2+}$  [20,27,30,31]. Thus, the DNA binding site for CREB, the cyclic AMP-response element, has also been called the  $\text{Ca}^{2+}$ -responsive element [30]. CREB is a substrate for multiple protein kinases including the cAMP-dependent protein kinase PKA, the  $\text{Ca}^{2+}$ /calmodulin regulated protein kinase CaMKIV, mitogen and stress-induced protein kinase (MSK), MAP kinase kinase 6, protein kinase B, ribosomal S6 kinase and others [32–35].



**Figure 2.**  $\text{Ca}^{2+}$ -responsive transcription factors. (A) Modular structure of CREB (cyclic AMP-response element (CRE)-binding protein). The basic region leucine zipper (bZIP) domain, used for dimerization and DNA binding, is located at the C-terminus. CREB contains a phosphorylation-dependent transcriptional activation domain (kinase-inducible domain, KID) and two constitutively active glutamine-rich activation domains (Q1 and Q2). The phosphorylation site within the KID is depicted. (B) The serum-response element (SRE) provides binding sites for the ternary complex factor Elk-1 and for SRF (serum response factor). SRF binds as a dimer to the consensus sequence  $\text{CC}[\text{A}/\text{T}]_6\text{GG}$ , known as CArG box. Elk-1 binds to a DNA motif with the consensus core sequence  $\text{GGAA}/\text{T}$ , called Ets site, because Ets (E26 transformation-specific) transcription factors interact with this DNA sequence. (C) Modular structure of Elk-1, showing the N-terminal DNA binding domain, the C-terminal activation domain with the key phosphorylation sites and the B domain that is required for interaction with the SRF dimer. (D) Modular structure of NFAT transcription factors. The transcriptional activation domains (TAD), the regulatory domain and the DNA binding domain are depicted. The binding sites for calcineurin are indicated. The sequences of the major binding sites of calcineurin to the NFAT proteins, the consensus site and the optimal binding site (VIVIT) are depicted.

A rise in intracellular  $\text{Ca}^{2+}$  activates the transcription factor Elk-1 that belongs to the family of ternary complex factors. Together with a dimer of the serum response factor (SRF), Elk-1 binds to the serum-response element (SRE) (Figure 2B) [36,37]. Elk-1 has an N-terminal DNA binding domain, a C-terminal transcriptional activation domain and an SRF-interaction domain (B domain), necessary for the formation of the ternary Elk-1-SRF complex (Figure 2C). Elk-1 is phosphorylated by the MAP kinases ERK1/2, p38 and JNK [38–41], connecting intracellular signaling cascades with the activation of SRE-mediated transcription.

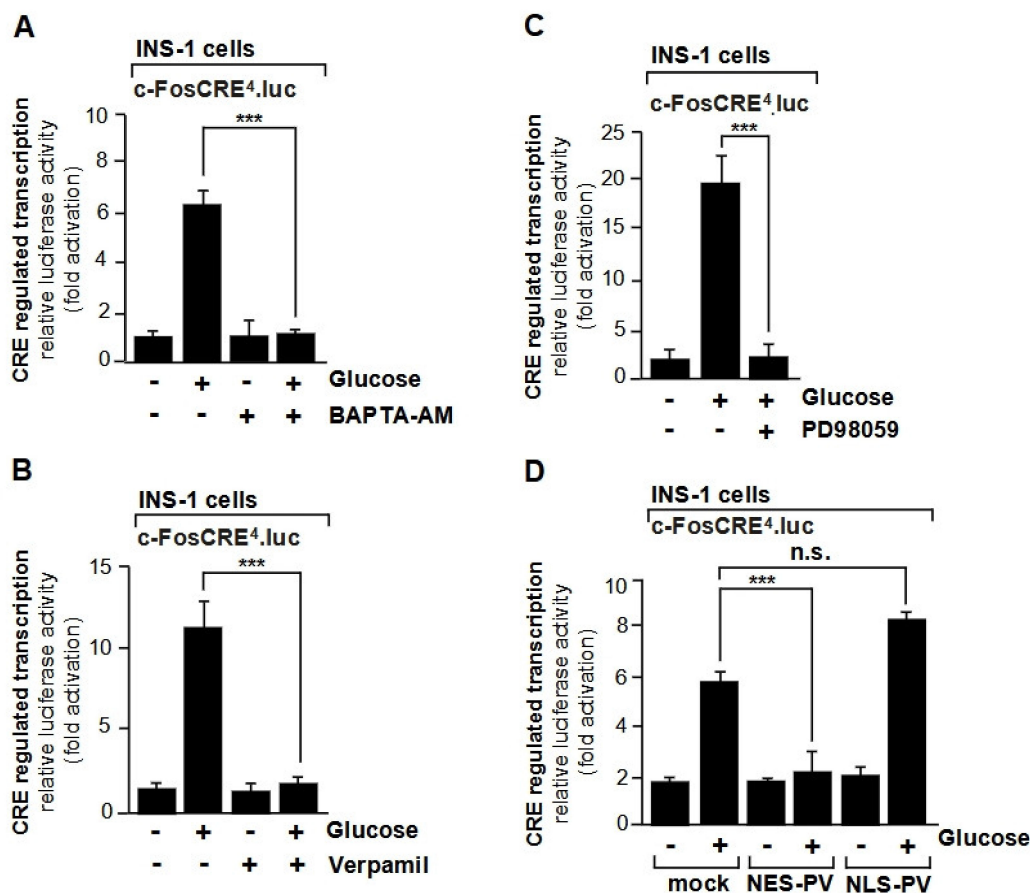
NFAT activation is also triggered by a rise in intracellular  $\text{Ca}^{2+}$ . This family of proteins is involved in the regulation of developmental programs of different vertebrate tissues [42]. The NFAT proteins have an *N*-terminal transcriptional activation domain (TAD), a regulatory domain (NFAT homology region, NHR) and a *C*-terminal DNA-binding domain (Rel-homology domain, RHR). The NHR contains binding sites for protein kinases (casein kinase-1, glycogen synthase kinase-3, dual-specific tyrosine-phosphorylation-regulated kinase DYRK) and for the protein phosphatase calcineurin (Figure 2D).

#### 4. $\text{Ca}^{2+}$ -Induced Gene Transcription: Role of Nuclear $\text{Ca}^{2+}$

There has been debate about the role of nuclear  $\text{Ca}^{2+}$  in  $\text{Ca}^{2+}$ -induced gene transcription. It has been suggested that the activation of  $\text{Ca}^{2+}$ -responsive transcription factors does not solely rely on the activation of  $\text{Ca}^{2+}$ -responsive signal transducers such as protein kinases and phosphatases. Rather, it has been proposed that the elevation of nuclear  $\text{Ca}^{2+}$  directly contributes to the activation of the  $\text{Ca}^{2+}$ -responsive transcription factors. This hypothesis is based on the assumption that a rise of cytoplasmic  $\text{Ca}^{2+}$  is directly propagated to the nucleus via diffusion of  $\text{Ca}^{2+}$  ions through the nuclear pore into the nucleus.  $\text{Ca}^{2+}$  signals, generated by neuronal activity at the plasma membrane, have been shown to unrestrictedly cross the nuclear pore in neurons [43]. However, changes in the nuclear  $\text{Ca}^{2+}$  concentration reflect changes in cytoplasmic  $\text{Ca}^{2+}$ . Therefore, it is difficult to distinguish between nuclear or cytoplasmic  $\text{Ca}^{2+}$  pools. In addition, the amplitude and the duration of  $\text{Ca}^{2+}$  signals are further modified by  $\text{Ca}^{2+}$ -accumulating organelles such as mitochondria and the endoplasmic reticulum expressing  $\text{Ca}^{2+}$  pumps and  $\text{Ca}^{2+}$  exchange proteins. This suggests that the  $\text{Ca}^{2+}$  signal that reaches the nucleus is reduced in comparison to the signal originally generated in the cytoplasm. An alternative hypothesis is that nuclear  $\text{Ca}^{2+}$  is increased independent of cytoplasmic  $\text{Ca}^{2+}$  via the activation of nuclear  $\text{IP}_3$  receptors that release  $\text{Ca}^{2+}$  ions directly into the nucleoplasm upon stimulation with  $\text{IP}_3$ . Thus,  $\text{IP}_3$ , that is generated in the cytoplasm, following activation of  $\text{G}\alpha_q$ -coupled receptors or receptor tyrosine kinases, may diffuse into the nucleus and may activate nuclear  $\text{IP}_3$  receptors that are expressed in the inner leaflet of the nuclear membrane, facing the nucleoplasm [44–46]. However, the presence of  $\text{IP}_3$  receptors at this location is controversial [46].

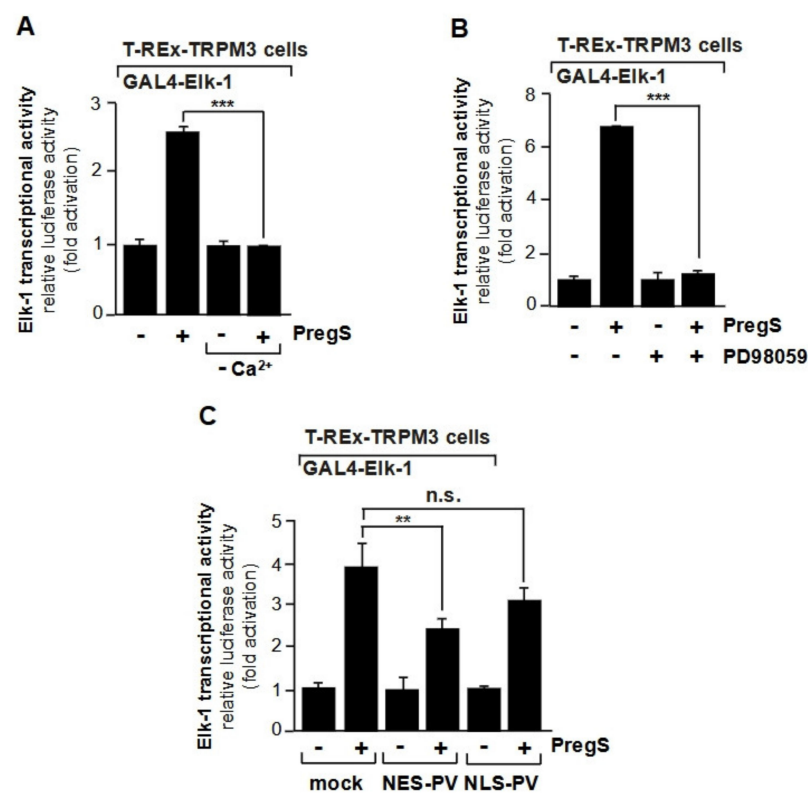
Despite the ongoing debate over the role of nuclear  $\text{Ca}^{2+}$ , several transcription factors that are responsive to changes in  $\text{Ca}^{2+}$  concentration have been identified. CREB has been called a “nuclear calcium-responsive transcription factor” [47], based on experiments involving activation of L-type voltage-gated  $\text{Ca}^{2+}$  channels in AtT20 pituitary cells and microinjection of a  $\text{Ca}^{2+}$  chelator into the nucleus to block CREB-regulated gene transcription. Surprisingly, the role of cytoplasmic signal transducers was not analyzed in this study. In contrast, an investigation of glucose stimulation of INS-1 insulinoma cells revealed that glucose led to an activation of CREB-regulated gene transcription, involving an influx of  $\text{Ca}^{2+}$  ions into the cytoplasm of the cells and an increase in cytoplasmic  $\text{Ca}^{2+}$  (Figure 3A). Pharmacological experiments showed that the glucose/ $\text{Ca}^{2+}$ -induced signaling cascade required the activation of L-type voltage-gated  $\text{Ca}^{2+}$  channels (Figure 3B) and ERK1/2 as a signal transducer (Figure 3C) [48]. The ERK1/2 signaling pathway was blocked with the compound PD98059 that interfered with the phosphorylation of the protein kinase MEK by Raf. Activation of ERK1/2 as a result of glucose stimulation and L-type voltage-dependent  $\text{Ca}^{2+}$  channel activation of insulinoma cells has also been observed by other investigators [5]. In the experiments addressing the role of nuclear  $\text{Ca}^{2+}$  for CREB-regulated gene transcription in AtT20 cells, the strategy of injecting a  $\text{Ca}^{2+}$  buffer into the nucleus of single cells was used [47]. This strategy has the disadvantage that it is not compatible with performing biochemical analyses. As an alternate, targeted expression of the  $\text{Ca}^{2+}$  binding protein, parvalbumin in either the nucleus or the cytosol has been successfully used to buffer  $\text{Ca}^{2+}$  signals in distinct compartments [14,48,49]. Parvalbumin is a low-molecular-weight protein that binds  $\text{Ca}^{2+}$  with high affinity via two EF-hand motifs [50]. High resolution recording of subcellular  $\text{Ca}^{2+}$  transients revealed that cytosolic and nucleoplasmic expression of the  $\text{Ca}^{2+}$  buffer parvalbumin specifically reduced the

amplitude of  $\text{Ca}^{2+}$  transients in the respective subcellular compartment [48]. Moreover, biochemical analysis revealed that glucose-induced transcription of a CREB-regulated reporter gene, through binding to CREs in the promoter region, required a rise in cytoplasmic  $\text{Ca}^{2+}$ , while buffering of the nuclear  $\text{Ca}^{2+}$  did not change the transcription of the reporter gene (Figure 3D) [48]. Thus,  $\text{Ca}^{2+}$ -induced stimulation of the ERK1/2 signaling pathway is sufficient to stimulate CRE-mediated transcription. A rise in cytoplasmic  $\text{Ca}^{2+}$  and not a rise in nuclear  $\text{Ca}^{2+}$  was also shown to be essential for the glucose-triggered activation of transcription factors AP-1 and Elk-1 [48]. In all cases, the activation of the Raf-MEK-ERK1/2 signaling cascade was essential for connecting a rise in cytoplasmic  $\text{Ca}^{2+}$  with gene transcription. Likewise, stimulation of L-type  $\text{Ca}^{2+}$  channels in neurons promoted an activation of ERK1/2 that in turn led to the phosphorylation of CREB and the transcription of CREB target genes [4].



**Figure 3.** Increased CRE-regulated transcription in glucose-stimulated insulinoma cells requires a rise in cytosolic  $\text{Ca}^{2+}$ . (A,B,C) INS-1 insulinoma cells expressing a chromatin-embedded CRE-responsive reporter gene (c-FosCRE<sup>4</sup>.luc) were maintained in serum-free medium containing 2 mM glucose for 24 h and then stimulated with glucose (11 mM) for 48 h. Cells were cultured in the presence or absence of the  $\text{Ca}^{2+}$  chelator BAPTA-AM (A), the L-type  $\text{Ca}^{2+}$  channel inhibitor verapamil (50  $\mu\text{M}$ ) (B), or the MAP kinase kinase inhibitor (PD98059) (C) as indicated. Cell extracts were prepared and analyzed for luciferase activities. Luciferase activity was normalized to the protein concentration. The compound PD98059 blocks phosphorylation of the MAP kinase kinase by Raf, and thus inhibits the ERK1/2 signaling pathway. (D) INS-1 insulinoma cells expressing a chromatin-embedded CRE-responsive reporter gene (c-FosCRE<sup>4</sup>.luc) were infected with a lentivirus encoding either mCherry as control, NES-PVmCherry, or NLS-PVmCherry, triggering expression of a parvalbumin-mCherry fusion protein either in the cytosol (NES-PVmCherry) or in the nucleus (NLS-PVmCherry). The cells were maintained in serum-free medium containing 2 mM glucose for 24 h. Stimulation with glucose (11 mM) was performed for 48 h. Cell extracts were prepared and analyzed for luciferase activities. Luciferase activity was normalized to the protein concentration. Data shown are means  $\pm$  SD of at least three experiments performed in quadruplicate (\*\*\*)  $p < 0.001$ ). Reproduced with modifications from ref. [48] with permission from Elsevier.

In addition to CREB, the ternary complex factor Elk-1 has been described to be regulated by the nuclear  $\text{Ca}^{2+}$  concentration following stimulation of HepG2 hepatoma cells or HEK293 cells with EGF [49]. Stimulation of the EGF receptor may lead to an increase in cytoplasmic  $\text{Ca}^{2+}$  via stimulation of phospholipase  $\text{C}\gamma$ , but also triggers a strong activation of the ERK1/2 signaling cascade [51]. It has been shown that stimulation of the cation channel TRPM3 leads to the increased transcriptional activation potential of Elk-1 involving an influx of  $\text{Ca}^{2+}$  ions into the cells and the activation of ERK1/2 (Figure 4A, B) [14]. Experiments using genetically encoded  $\text{Ca}^{2+}$  buffers revealed that a rise in cytoplasmic  $\text{Ca}^{2+}$  is required for the upregulation of the transcriptional activation potential of Elk-1 (Figure 4C) [14]. In contrast, buffering nuclear  $\text{Ca}^{2+}$  had no inhibitory effect on the transcriptional activity of Elk-1. Thus,  $\text{Ca}^{2+}$ -induced activation of Elk-1 required a rise in cytoplasmic  $\text{Ca}^{2+}$  and the subsequent stimulation of the Raf-MEK-ERK1/2 signaling pathway and was independent of the nuclear  $\text{Ca}^{2+}$  concentration. The observation that a rise in cytoplasmic  $\text{Ca}^{2+}$  and not in nuclear  $\text{Ca}^{2+}$  is essential for the activation of Elk-1 via TRPM3 is corroborated by experiments involving inhibition of the cytoplasmic enzyme MAP kinase kinase with the compound PD98059 [14]. Inhibition of phosphorylation of MAP kinase kinase blocks the phosphorylation and activation of ERK1/2, the key enzyme of the ERK1/2 signaling pathway.



**Figure 4.** Stimulation of the TRPM3  $\text{Ca}^{2+}$  channel increases the transcriptional activation potential of Elk-1, involving a rise of cytosolic  $\text{Ca}^{2+}$ . **(A)** An influx of  $\text{Ca}^{2+}$  ions into the cells is essential for the activation of Elk-1 following stimulation of TRPM3  $\text{Ca}^{2+}$  channels. HEK293 expressing TRPM3  $\text{Ca}^{2+}$  channels were infected with a lentivirus containing a GAL4-responsive luciferase reporter gene (*UAS5Sp12.luc*). In addition, cells were infected with a lentivirus encoding GAL4-Elk-1 fusion protein, used to monitor the transcriptional activation potential of Elk-1. The cells were serum-starved for 24 h in either DMEM or  $\text{Ca}^{2+}$ -free medium. Cells were stimulated with the TRPM3 ligand pregnenolone sulfate (PregS, 20  $\mu\text{M}$ ) for 24 h. Cell extracts were prepared and analyzed for luciferase activities. Luciferase activity was normalized to the protein concentration. **(B)** Extracellular signal-regulated

protein kinase (ERK1/2) functions as a signal transducer connecting TRPM3 channels with the Elk-1 transcription factor. HEK293 cells expressing TRPM3  $\text{Ca}^{2+}$  channels and the GAL4-Elk-1 fusion were infected with a recombinant lentivirus containing a GAL4-responsive reporter gene (*UAS<sup>5</sup>Sp1<sup>2</sup>.luc*). The cells were preincubated for 3 h with PD98059 (50  $\mu\text{M}$ ) and then stimulated with pregnenolone sulfate (PregS, 20  $\mu\text{M}$ ) for 24 h in the presence of PD98059. Cell extracts were prepared and analyzed for luciferase activities. (C) A rise in cytoplasmic  $\text{Ca}^{2+}$  is required for the upregulation of the transcriptional activation potential of Elk-1 following activation of TRPM3  $\text{Ca}^{2+}$  channels. HEK293 cells expressing TRPM3 and GAL4-Elk-1 were infected with a lentivirus to insert the GAL4-responsive reporter gene *UAS<sup>5</sup>Sp1<sup>2</sup>.luc* into the chromatin. In addition, cells were infected with a lentivirus encoding either mCherry (control), NES-PVmCherry, or NLS-PVmCherry. The cells were serum-starved for 24 h and then stimulated with the TRPM3 ligand pregnenolone sulfate (PregS, 20  $\mu\text{M}$ ) for 24 h. Cell extracts were prepared and analyzed for luciferase activities. Data shown are mean  $\pm$  S.D. of three independent experiments performed in quadruplicate (\*\*  $p < 0.001$ , n.s., not significant). Reproduced with modifications from ref. [14] with permission from Elsevier.

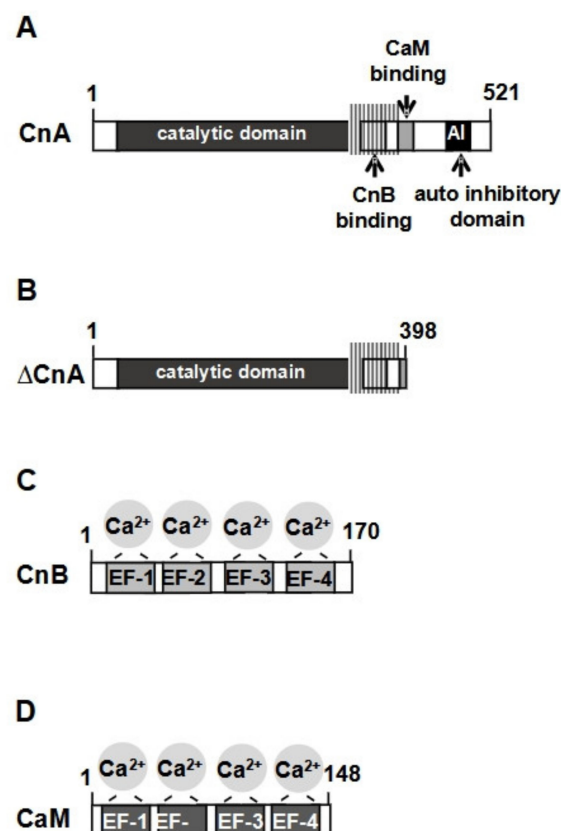
NFAT transcription factors are cytoplasmic phosphoproteins that migrate into the nucleus following dephosphorylation catalyzed by calcineurin. While NFAT1 remains in the nucleus for some time, NFAT4 is rapidly exported out of the nucleus. A sophisticated study employing the nuclear-directed  $\text{Ca}^{2+}$  buffer parvalbumin revealed that NFAT4 retention in the nucleus was dependent on a high level of  $\text{Ca}^{2+}$ . In contrast, the presence of NFAT1 in the nucleus was independent of the  $\text{Ca}^{2+}$  concentration in the nucleus [28]. Viewing the entire signal cascade, these results suggest that a high stimulus intensity triggers the nuclear translocation of both NFAT1 and NFAT4 and the sustained expression of both proteins in the nucleus, whereas a low stimulus intensity also triggers NFAT1 and NFAT4 translocation, but NFAT4 is rapidly exported back into the cytoplasm. By this means, the stimulus intensity may regulate different genetic patterns, dependent either on both NFAT1 and NFAT4 (high intensity) or only on NFAT1 (low intensity). Moreover, using a genetically encoded nuclear  $\text{IP}_3$  buffer, it was shown that nuclear expression of NFAT4 requires the activation of nuclear  $\text{IP}_3$  receptors by  $\text{IP}_3$  that had been generated at the plasma membrane and diffused into the nucleus. As a result, the  $\text{Ca}^{2+}$  concentration in the nucleus increased even when cytoplasmic  $\text{Ca}^{2+}$  ions were buffered [45], prolonging the nuclear presence of NFAT4. However, we have to point out that the investigators measured translocation of NFAT proteins in this study, but did not directly measure NFAT-regulated gene transcription. NFAT proteins bind DNA with relatively low affinity. Formation of a complex with a nuclear partner strongly increases their DNA affinity. In particular, NFAT proteins associate with the transcription factor AP-1. Thus, sustained activity of NFAT4 in the nucleus would require a sustained nuclear expression of an NFAT4 binding partner. Thus, without identification of the nuclear partner, the sustained presence of NFAT4 in the nucleus alone does not necessarily predict sustained NFAT4-controlled gene transcription. The hypothesis of Kar et al. [45], that the concentration of nuclear  $\text{Ca}^{2+}$  induces distinct genetic signatures by regulating NFAT nuclear retention or export, will require proof that the translocated NFAT proteins are able to activate common and distinct genes. Finally, the presence of nuclear calcineurin that would be necessary to keep nuclear NFAT proteins in a dephosphorylated state has not been investigated in this study.

Whether there is a distinct role for nuclear  $\text{Ca}^{2+}$  in gene transcription is still contentious. The use of a genetically encoded  $\text{Ca}^{2+}$  buffer has certainly helped in elucidating the role of cytoplasmic versus nuclear  $\text{Ca}^{2+}$ . Importantly, the role of ERK1/2 as signal transducer that translates high cytoplasmic  $\text{Ca}^{2+}$  levels into the activation of  $\text{Ca}^{2+}$ -regulated transcription factors in the nucleus has to be considered. The investigation of NFAT1 and NFAT4 translocation provided further evidence for the role of cytoplasmic, and not solely nuclear,  $\text{Ca}^{2+}$  in activation of gene transcription [52].



## 5. Calcineurin

The  $\text{Ca}^{2+}$ /calmodulin-dependent protein phosphatase calcineurin is a heterodimer, composed of the catalytic calcineurin A-subunit and the regulatory B-subunit. The modular structure of calcineurin A, depicted in Figure 5A, shows that the protein has an extended catalytic domain, followed by a binding site for calcineurin B, a calmodulin-binding domain and a C-terminal autoinhibitory domain. The active site of the enzyme has a dinuclear ( $\text{Fe}^{3+}$ - $\text{Zn}^{2+}$ ) metal center. In the absence of  $\text{Ca}^{2+}$  ions, calcineurin is inactive, due to a binding of the autoinhibitory domain to the catalytic center. An influx of  $\text{Ca}^{2+}$  ions from the external milieu into the cytosol (via activation of cell-surface-located  $\text{Ca}^{2+}$  channels) or an influx of  $\text{Ca}^{2+}$  ions from the endoplasmic reticulum into the cytosol (following stimulation of  $\text{G}\alpha\text{q}$ -coupled receptors) leads to the activation of calcineurin. The regulatory B-subunit is tightly bound to calcineurin A, whereas calmodulin binding is  $\text{Ca}^{2+}$  dependent. Activation of calcineurin requires the binding of  $\text{Ca}^{2+}$  ions to calcineurin B and the  $\text{Ca}^{2+}$ -dependent binding of a  $\text{Ca}^{2+}$ /calmodulin complex to calcineurin A. The binding of calmodulin to the calmodulin-binding domain triggers the displacement of the autoinhibitory domain, leading to the activation of the enzyme [53–56]. A truncated calcineurin A mutant, called  $\Delta\text{CnA}$  (Figure 5B), lacks the C-terminal autoinhibitory domain and a portion of the calmodulin binding site. It is constitutively active and does not need  $\text{Ca}^{2+}$  ions for its activation. The small regulatory calcineurin B-subunit (Figure 5C) shows homology with the  $\text{Ca}^{2+}$  binding protein calmodulin (Figure 5D) and binds  $\text{Ca}^{2+}$  ions via four EF-hand  $\text{Ca}^{2+}$  binding motifs.



**Figure 5.** Modular structure of calcineurin. (A) Domain structure of calcineurin A. The enzyme has an extended catalytic domain, binding sites for calcineurin B and calmodulin and a C-terminal autoinhibitory domain that keeps the holoenzyme in an inactive state in the absence of elevated  $\text{Ca}^{2+}$  concentrations. (B) The truncated calcineurin A mutant ( $\Delta\text{CnA}$ ) lacks the autoinhibitory domain and a portion of the calmodulin binding site. (C,D) Calcineurin B (C) and calmodulin (D) are small proteins containing 4 EF hands for  $\text{Ca}^{2+}$  binding.

Calcineurin is ubiquitously expressed, with the highest expression in the brain. The enzyme is mainly found in the cytoplasm, but calcineurin immunoreactivity has also been found in the nucleus [28,55,57]. Calcineurin has been shown to migrate into the nucleus in thapsigargin-stimulated RBL mast cells [28]. Expression of a fusion protein of the truncated calcineurin A mutant  $\Delta$ CnA with EGFP showed that the enzyme was in the cytoplasm (10), suggesting that cytoplasmic calcineurin affects gene transcription. Thus, calcineurin is activated following a rise in cytoplasmic  $\text{Ca}^{2+}$ , either by activating  $\text{Ca}^{2+}$  channels of the plasma membrane or the endoplasmic reticulum, or by the release of  $\text{Ca}^{2+}$  ions from intracellular organelles such as mitochondria or lysosomes.

Calcineurin became of medical interest following the discovery that the clinically important immunosuppressive drugs tacrolimus (FK506) and cyclosporin A, used for the treatment of organ rejection in transplanted patients, function as potent calcineurin inhibitors when they are bound to the immunophilins FKBP12 or cyclophilin A, respectively [58]. However, we would like to emphasize that neither tacrolimus nor cyclosporin A is calcineurin-specific. The immunophilins are cytosolic peptidyl-prolyl isomerases that are involved in the regulation of many biological functions, including ion channel activation, intracellular  $\text{Ca}^{2+}$  release and protein folding [59,60]. In addition to regulating calcineurin activity, cyclosporin A has been described as an inhibitor of mitochondrial  $\text{Ca}^{2+}$  uptake and the mitochondrial permeability transition pore [61,62]. Cyclosporin A also modulates innate immunity [63]. Tacrolimus has been identified as an activator of the non-selective cation channel TRPM8 [64] that is primarily stimulated by cold temperature and cooling-agents such as menthol or icilin. Many investigators have used either tacrolimus or cyclosporin A as a calcineurin inhibitor. However, puzzling data have sometimes been published which may be explained by the other activities of these pharmacological compounds. There are several genetically encoded calcineurin inhibitors that may be more suitable for investigation of calcineurin functions. The regulator of calcineurin (RCAN) proteins inhibit calcineurin activity very efficiently and have been shown to inhibit calcineurin-dependent gene transcription [65]. RCAN1 binds to a site within calcineurin A, located between the catalytic domain and the binding site for the regulatory calcineurin B subunit. The RCAN1-encoding gene is located on chromosome 21. Overexpression of RCAN1 has been found in the brain of Alzheimer's disease patients and humans with Down syndrome. The RCAN proteins are thought to establish a negative feedback loop that prevents high calcineurin activity [65,66].

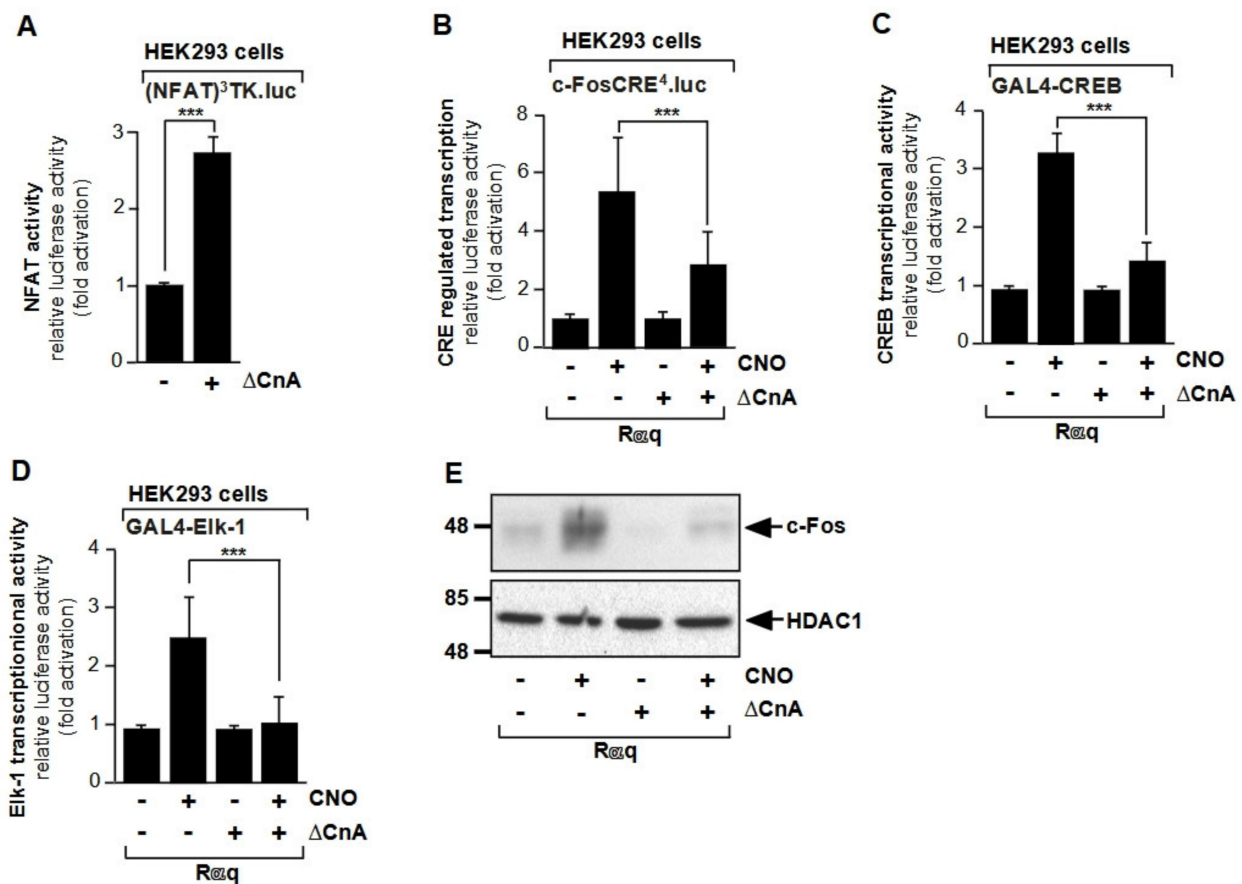
## 6. Calcineurin Regulates Gene Transcription

Calcineurin-induced dephosphorylation of proteins is connected with several biological functions, including inhibition of neurotransmission, desensitization of postsynaptic  $\text{Ca}^{2+}$  channels, activation of nitric oxide synthase, and regulation of the  $\text{Na}^+$ ,  $\text{K}^+$ -ATPase and others. Here, we focus our attention on the regulation of gene transcription by calcineurin-mediated protein dephosphorylation.

### 6.1. Calcineurin-Catalyzed Dephosphorylation Activates NFAT

The best studied substrates of calcineurin are the transcription factors of the NFAT family that are regulated by the cytoplasmic  $\text{Ca}^{2+}$  concentration. Calcineurin is activated by a rise in cytosolic  $\text{Ca}^{2+}$  concentration, which can be generated in various microdomains of the cell. A rise in cytoplasmic  $\text{Ca}^{2+}$  may be the result of a  $\text{Ca}^{2+}$  influx through  $\text{Ca}^{2+}$  channels of the plasma membrane (voltage-gated  $\text{Ca}^{2+}$  channels, Orai channels) or the endoplasmic reticulum (ionotropic  $\text{IP}_3$  receptors) [28,67,68]. Calcineurin may also be activated by a release of  $\text{Ca}^{2+}$  ions from mitochondria. Prolonged  $\text{Ca}^{2+}$  release from the mitochondria of sensory neurons facilitates nuclear transport of NFAT in neurons [69]. The NFAT proteins 1–4 are cytoplasmic phosphoproteins that translocate from the cytoplasm to the nucleus upon dephosphorylation by calcineurin [42,54,56,70,71]. NFAT proteins return to the cytoplasm following rephosphorylation by constitutively active protein kinases, indicating that the balance between NFAT kinases and calcineurin determines whether

NFAT proteins translocate from the cytoplasm into the nucleus. Moreover, sustained NFAT transcriptional activity requires prolonged expression of calcineurin in the nucleus and sustained elevated nuclear  $\text{Ca}^{2+}$  levels. Figure 6A shows that expression of a constitutively active form of calcineurin A is sufficient to activate transcription of a chromatin-embedded NFAT-responsive reporter gene [68]. There are two binding sites for calcineurin in the regulatory domains of NFAT proteins. The major calcineurin binding site A, located at the N-terminus of the regulatory region, encompasses the consensus sequence P $\times$ I $\times$ IT, as depicted in Figure 2D. Next to the calcineurin binding site A is the “serine-rich gatekeeper region” (SRR-1) with several phosphorylated serine residues. The nuclear localization signal (NLS) is also located within the regulatory domain of NFAT proteins and is masked by the phosphate groups, so that NFAT remains in the cytoplasm. Calcineurin-catalyzed dephosphorylation of NFAT proteins exposes the NLS to the nuclear translocation machinery, so that NFAT migrates into the nucleus. Mutation of the calcineurin binding site A impairs dephosphorylation and nuclear translocation of NFAT proteins [72,73]. Expression of a peptide spanning the calcineurin binding site attenuated NFAT dephosphorylation, NFAT nuclear translocation, and NFAT-controlled gene transcription [72]. Based on the calcineurin docking site to NFAT, a peptide sequence termed VIVIT was identified from combinatorial peptide libraries showing a much higher affinity to calcineurin than the original calcineurin binding site. The peptide inhibited NFAT activation and NFAT-regulated transcription of cytokine-encoding genes in T cells. In the nervous system, expression of the VIVIT peptide inhibited NFAT activation and alleviated amyloid beta neurotoxicity [74,75]. Exchange of the PRIEIT sequence in NFAT1 with the PVIVIT generated an NFAT1 molecule that was dephosphorylated under resting conditions and was partially found in the nucleus [74]. These data suggest that the increased affinity of calcineurin to the mutated NFAT1 protein allowed a competition between the calcineurin substrate NFAT1 and the autoinhibitory domain of calcineurin for binding to the catalytic site of calcineurin, even under resting  $\text{Ca}^{2+}$  concentrations.



**Figure 6.** Regulation of gene transcription by calcineurin. (A) Expression of  $\Delta$ CnA, a constitutively active mutant of calcineurin A, increased transcription of an NFAT-responsive reporter gene. HEK293 cells containing a chromatin-integrated NFAT-responsive reporter gene (NFAT)<sup>3</sup>TK.luc were infected with a recombinant lentivirus encoding  $\Delta$ CnA. The cells were serum-starved for 24 h. Cell extracts were prepared and analyzed for luciferase activities. Luciferase activity was normalized to the protein concentration. (B) Calcineurin attenuates CRE-regulated gene transcription in HEK293 cells expressing activated G $\alpha$ q-coupled designer receptors. HEK293 cells containing a chromatin-embedded CRE-containing reporter gene (c-FosCRE<sup>4</sup>.luc) were infected with a lentivirus encoding a G $\alpha$ q-coupled designer receptor (R $\alpha$ q). Cells were either mock-infected or additionally infected with a lentivirus encoding  $\Delta$ CnA as indicated. The cells were serum-starved for 24 h and then stimulated with the R $\alpha$ q ligand clozapine-N-oxide (CNO, 1  $\mu$ M) for 24 h. Cell extracts were prepared and analyzed. (C) Expression of  $\Delta$ CnA reduces the transcriptional activation potential of CREB in HEK293 cells expressing activated G $\alpha$ q-coupled designer receptors. HEK293 cells that expressed the G $\alpha$ q-coupled designer receptor R $\alpha$ q and a GAL4-CREB fusion protein were used to measure the transcriptional activation potential of CREB. In addition, the cells contained a chromatin-integrated GAL4-responsive reporter gene used to measure the transcriptional activity of the GAL4-CREB fusion protein. Cells were either mock-infected or infected with a lentivirus encoding  $\Delta$ CnA as indicated. Cells were stimulated with CNO (1  $\mu$ M) for 24 h. (D) Expression of  $\Delta$ CnA reduces the transcriptional activation potential of Elk-1 in HEK293 cells expressing activated G $\alpha$ q-coupled designer receptors. HEK293 cells that expressed the G $\alpha$ q-coupled designer receptor R $\alpha$ q and a GAL4-Elk-1 fusion protein were used to measure the transcriptional activation potential of Elk-1. In addition, cells contained a chromatin-integrated GAL4-responsive reporter gene to measure the transcriptional activity of the GAL4-Elk-1 fusion protein. Cells were either mock-infected or infected with a lentivirus encoding  $\Delta$ CnA as indicated. Cells were stimulated with CNO (1  $\mu$ M) for 24 h. Luciferase activity was normalized to the protein concentration. Data shown are means  $\pm$  SD of at least three experiments performed in quadruplicate (\*\*\*)  $p < 0.001$ . (E) Expression of a constitutively active mutant of calcineurin A ( $\Delta$ CnA) negatively regulates c-Fos expression following stimulation of a G $\alpha$ q-coupled designer receptor (R $\alpha$ q). HEK293 cells expressing R $\alpha$ q were either mock-infected or infected with a lentivirus encoding  $\Delta$ CnA. Cells were cultured for 24 h in medium containing 0.05% serum and then stimulated with the R $\alpha$ q ligand CNO (1  $\mu$ M) for 3 h. Western blot analysis of proteins of nuclear extracts using an antibody directed against c-Fos. The antibody directed against HDAC1 was used as a loading control. Reproduced with modifications from ref. [68] with permission from Elsevier.

Activation of NFAT proteins requires a  $\text{Ca}^{2+}$  rise in the cytoplasm and presence of active calcineurin. The hypothesis that a rise in nuclear  $\text{Ca}^{2+}$  activates NFAT4 [45] implies that the rise in nuclear  $\text{Ca}^{2+}$  is accompanied by a rise of activated calcineurin in the nucleus, because NFAT proteins must be kept in a dephosphorylated state to sustain nuclear expression. It has been proposed that calcineurin is transported in the nucleus together with NFAT4 where it continues to dephosphorylate NFAT4 [76]. However, a comparison of the time course of calcineurin and NFAT1 and NFAT4 migration argues against a co-transport of NFAT proteins with calcineurin [28]. It would be interesting to know whether expression of an endogenous calcineurin inhibitor such as RCAN1 in the nucleus would induce export of NFAT4 from the nucleus into the cytoplasm. Moreover, the hypothesis of Kar et al. [45] is built on the assumption that nuclear expression of NFAT proteins can be used as measure for NFAT-regulated gene transcription. To support the hypothesis that nuclear  $\text{Ca}^{2+}$  activates NFAT4, a direct gene transcription assay is needed to clearly show the upregulation of NFAT-regulated gene transcription under these conditions.

### 6.2. Calcineurin Modulates CREB Activity

NFAT transcription factors are active in the dephosphorylated state. Thus, dephosphorylation by calcineurin induces activation of NFAT-controlled transcription. In contrast, several transcription factors are activated by phosphorylation. Accordingly, dephosphorylation is connected with inactivation of gene transcription by these transcription factors. The prototype of a phosphorylation-regulated transcription factor is CREB. Phosphorylation by several protein kinases, in particular PKA and  $\text{Ca}^{2+}$ /calmodulin-dependent protein kinase IV, activates CREB-regulated transcription, whereas dephosphorylation by protein phosphatases 1 and 2A inactivates the protein. CREB is not a substrate for calcineurin, but is indirectly regulated by this phosphatase. Figure 6B shows that CREB-regulated transcription, induced by stimulating  $\text{G}\alpha\text{q}$ -coupled designer receptors, was attenuated in the presence of the constitutively active calcineurin mutant  $\Delta\text{CnA}$ . In line with this observation, the transcription activation potential of CREB was reduced in the presence of  $\Delta\text{CnA}$  (Figure 6C). Calcineurin, however, did not reduce the transcriptional activity of the C2/CREB mutant that activated CRE-mediated transcription independently of phosphorylation [68]. These data were corroborated by data showing that CREB-regulated gene transcription is activated following inhibition of calcineurin by RCAN1 expression [77]. These experiments fit very well with the hypothesis that calcineurin functions as a negative regulator of CREB. Calcineurin dephosphorylates inhibitor-1, a protein inhibitor of protein phosphatase-1. Phosphorylation of inhibitor-1 by PKA turns this protein in an active protein phosphatase-1 inhibitor, while the dephosphorylated inhibitor-1 is inactive. Dephosphorylation of inhibitor-1 by calcineurin relieves the inhibition of protein phosphatase-1, resulting in a dephosphorylation and inactivation of CREB [78]. It is interesting that a rise in intracellular  $\text{Ca}^{2+}$  activates CREB-controlled gene transcription (via activation of  $\text{Ca}^{2+}$ /calmodulin-dependent protein kinase IV) and subsequently triggers an inactivation of CREB (via calcineurin-catalyzed dephosphorylation of inhibitor-1 and the activation of protein phosphatase-1). Calcineurin is therefore part of a negative feedback loop of  $\text{Ca}^{2+}$ -initiated transcription of CREB target genes.

Alternatively, calcineurin has been described as a positive regulator of CREB. According to this scenario, calcineurin dephosphorylates the transducer of regulated CREB activity-2 (TORC2) which is sequestered in the cytoplasm via binding to 14-3-3 proteins.  $\text{Ca}^{2+}$ -activated calcineurin catalyzes the dephosphorylation of TORC2, allowing its translocation into the nucleus. TORC2 binds to the bZIP domain of CREB and functions as a coactivator [79]. Our experiments prefer the first hypothesis with calcineurin as a negative regulator of CREB-mediated transcription. However, both hypotheses have not been analyzed and compared in detail, which would involve an analysis of the phosphorylation state of inhibitor-1 and TORC2, the activity of protein phosphatase-1 and the nuclear expression of these proteins after a rise in cytoplasmic  $\text{Ca}^{2+}$ .

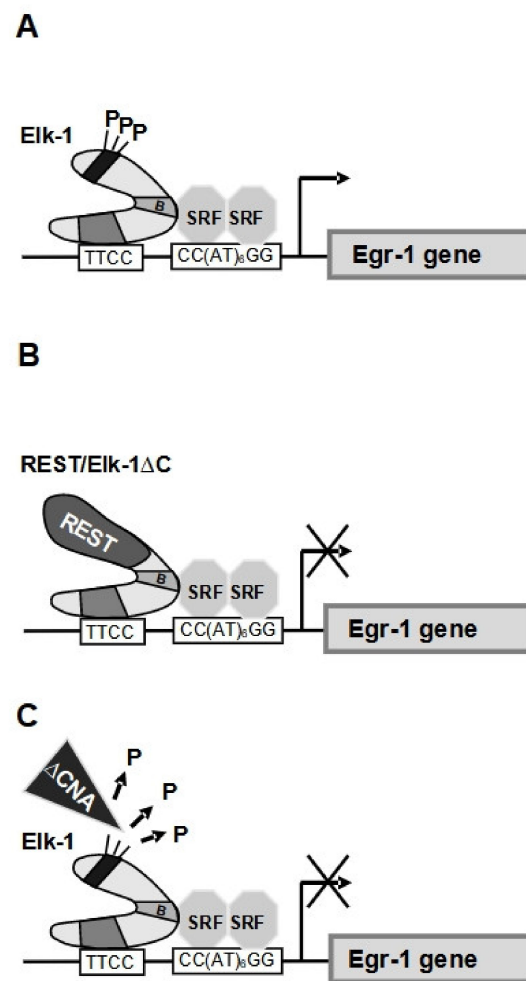
### 6.3. Calcineurin Dephosphorylates Elk-1 and Inhibits SRE-Mediated Transcription

The ternary complex factor protein Elk-1 has been identified as a major substrate for calcineurin [80,81]. Elk-1 requires phosphorylation of sites within the transcriptional activation domain, primarily on serine residue 383, to become an active transcription factor. Accordingly, dephosphorylation of Elk-1 is connected with inhibition of Elk-1-mediated gene transcription. In vitro experiments showed that calcineurin dephosphorylates Elk-1 in the presence of  $\text{Ca}^{2+}$  and calmodulin [80]. Using phospho-specific antibodies, dephosphorylation of serine residue 383 of Elk-1 by calcineurin was demonstrated [81]. Figure 6D shows that the transcriptional activation potential of Elk-1 was significantly reduced in the presence of the constitutively activate calcineurin mutant  $\Delta\text{CnA}$ . Similarly, expression of a constitutively active mutant of calcineurin blocked Raf-1 protein kinase-induced upregulation of the transcriptional activation potential of Elk-1, but did not affect the transcriptional activation potential of the transcription factor ATF2 which is not a substrate for calcineurin [81]. Likewise, stimulus-induced expression of the transcription factor c-Fos was strongly reduced when  $\Delta\text{CnA}$  was overexpressed (Figure 6E). The Egr-1 and c-Fos promoter activities were reduced as well in the presence of  $\Delta\text{CnA}$  [68]. In neurons, it has been shown that expression of the constitutively active mutant of calcineurin A inhibited depolarization-induced expression of c-Fos expression [82].

The connection between calcineurin activity and Elk-1-regulated gene transcription was highlighted in several transgenic mouse models (Table 1). It has been shown that transgenic mice expressing a constitutively active mutant of calcineurin in pancreatic  $\beta$ -cells had decreased  $\beta$ -cell mass, exhibited hyperglycemia and showed enhanced apoptosis [83]. As Elk-1 is a major substrate for calcineurin, expression of the calcineurin mutant in  $\beta$ -cells of transgenic mice induced dephosphorylation and inactivation of Elk-1. This assumption was verified in the analysis of transgenic mice expressing a dominant-negative mutant of Elk-1 (termed REST/Elk-1 $\Delta\text{C}$ ) in pancreatic  $\beta$ -cells [84]. The morphometric analysis of these mice revealed that the islets were approximately 50% smaller when the transgene was expressed. These data indicate that an Elk-1-regulated gene expression program is required for the generation of islets of adequate size. Experiments performed with REST/Elk-1 $\Delta\text{C}$ -expressing mice showed that transgene expression resulted in increased caspase-3 activity and impaired glucose tolerance (Table 1 and Figure 7). Thus, expression of a dominant-negative mutant of Elk-1 in pancreatic  $\beta$ -cells resulted in a similar phenotype as the expression of a constitutively active mutant of calcineurin. A major target of Elk-1 is the Egr-1 gene, encoding a zinc finger transcription factor. Expression of the dominant-negative mutant of Elk-1 almost completely blocked the stimulus-induced activation of Egr-1 biosynthesis in insulinoma cells [84]. Interestingly, transgenic mice expressing a dominant-negative mutant of Egr-1 in pancreatic  $\beta$ -cells also had smaller pancreatic islets in comparison to control mice, increased caspase-3/7 activities and were hyperglycemic in glucose tolerance tests (Table 1 and Figure 7) [85]. Further supporting the view that calcineurin functions as a negative regulator of SRE-controlled genes, it has been shown that suppression of calcineurin activity in hippocampal neurons resulted in upregulation of Egr-1 expression [82].

**Table 1.** Phenotypes of transgenic mice models.

Mouse Model	$\beta$ -cell ↓ Mass	Hyperglycemia	↑ Apoptosis	Reference
Expression of a constitutively active mutant of <b>calcineurin</b> in $\beta$ -cells	✓	✓	✓	[83]
Expression of a dominant negative mutant of Elk-1 in $\beta$ -cells	✓	✓	✓	[84]
Expression of a dominant negative mutant of Egr-1 in $\beta$ -cells	✓	✓	✓	[85]



**Figure 7.** Orchestrated activities of calcineurin, Elk-1 and Egr-1 in pancreatic  $\beta$ -cells regulating islet size, apoptosis and glucose homeostasis. (A) The gene encoding the transcription factor Egr-1 contains five serum-response elements (SREs) that serve as binding sites for Elk-1 and serum response factor (SRF). Transgenic mice expressing a constitutively active mutant of Egr-1, that interferes with Egr-1-regulated gene transcription in pancreatic  $\beta$ -cells, showed a phenotype with reduced islet size, impaired glucose tolerance and increased caspase-3 activity. (B) A similar phenotype was obtained in transgenic mice expressing a dominant-negative mutant of Elk-1. This mutant, named REST/EIk-1 $\Delta$ C, inhibits expression of SRE-regulated genes, including the Egr-1-encoding gene. (C) Expression of a constitutively active mutant of calcineurin in pancreatic  $\beta$ -cells generated a similar phenotype. Calcineurin dephosphorylates and inactivates Elk-1. Reproduced with modifications from ref. [84] with permission from Elsevier.

## 7. Conclusions

$\text{Ca}^{2+}$  ions function as second messengers in cells and regulate multiple intracellular functions. Stimulus-regulated gene expression is one of the important functions of elevated  $\text{Ca}^{2+}$  concentrations. Stimulation of plasma membrane receptors or ion channels leads to a rise in intracellular  $\text{Ca}^{2+}$ , but also the release of  $\text{Ca}^{2+}$  from intracellular stores such as the endoplasmic reticulum, mitochondria and lysosomes. Specialized subcellular  $\text{Ca}^{2+}$  microdomains orchestrate the specificities of intracellular  $\text{Ca}^{2+}$  signals. Due to the uptake of  $\text{Ca}^{2+}$  ions into intracellular  $\text{Ca}^{2+}$  stores and their export by  $\text{Ca}^{2+}$  pumps, the duration and periodicity of  $\text{Ca}^{2+}$  transients may be very different, resulting in different signaling events.  $\text{Ca}^{2+}$  activates a variety of intracellular enzymes that are used as signal transducers and for prolonging the duration of the  $\text{Ca}^{2+}$  signal. While the  $\text{Ca}^{2+}$  concentration may be reduced in the cell by active  $\text{Ca}^{2+}$  pumps and transporters, the  $\text{Ca}^{2+}$ -activated enzymes

remain active and execute the functions initiated by a local  $\text{Ca}^{2+}$  rise. A particularly interesting  $\text{Ca}^{2+}$ -regulated enzyme is the phosphatase calcineurin that can either activate or inhibit  $\text{Ca}^{2+}$ -responsive transcription factors. Thus, calcineurin links  $\text{Ca}^{2+}$ -induced protein dephosphorylation with the regulation of gene expression.

**Funding:** University of Saarland, grant number LOM-T201000492.

**Institutional Review Board Statement:** Not applicable.

**Informed Consent Statement:** Not applicable.

**Conflicts of Interest:** The authors state no conflict of interest.

## References

- Morgan, A.J.; Platt, F.M.; Lloyd-Evans, E.; Galione, A. Molecular mechanisms of endolysosomal  $\text{Ca}^{2+}$  signaling in health and disease. *Biochem. J.* **2011**, *439*, 349–374. [[CrossRef](#)] [[PubMed](#)]
- Lavoie, H.; Gagnon, J.; Therrien, M. ERK signalling: A master regulator of cell behaviour, life and fate. *Nat. Rev. Mol. Biol.* **2020**, *21*, 607–632. [[CrossRef](#)]
- Rubil, S.; Rössler, O.G.; Thiel, G. CREB, AP-1, ternary complex factors and MAP kinases connect transient receptor potential melastatin-3 (TRPM3) channel stimulation with increased c-Fos expression. *Brit. J. Pharmacol.* **2016**, *173*, 305–318. [[CrossRef](#)] [[PubMed](#)]
- Dolmetsch, R.E.; Pajvani, U.; Fife, K.; Spotts, J.M.; Greenberg, M.E. Signaling to the nucleus by an L-type calcium channel-calmodulin complex through the MAP kinase pathway. *Science* **2001**, *294*, 333–339. [[CrossRef](#)] [[PubMed](#)]
- Arnette, D.; Gibson, T.B.; Lawrence, M.C.; January, B.; Khoo, S.; McGlynn, K.; Vanderbilt, C.A.; Cobb, M.H. Regulation of ERK1 and ERK2 by glucose and peptide hormones in pancreatic  $\beta$  cells. *J. Biol. Chem.* **2003**, *278*, 32517–32525. [[CrossRef](#)] [[PubMed](#)]
- Mayer, S.I.; Thiel, G. Calcium influx into MIN6 insulinoma cells induces expression of Egr-1 involving extracellular signal-regulated protein kinase and the transcription factors Elk-1 and CREB. *Eur. J. Cell Biol.* **2009**, *88*, 19–33. [[CrossRef](#)]
- Stefano, L.; Rössler, O.G.; Griesemer, D.; Hoth, M.; Thiel, G. P2X<sub>7</sub> receptor stimulation upregulates Egr-1 biosynthesis involving a cytosolic  $\text{Ca}^{2+}$  rise, transactivation of the EGF receptor and phosphorylation of ERK and Elk-1. *J. Cell Physiol.* **2007**, *213*, 36–44. [[CrossRef](#)] [[PubMed](#)]
- Mayer, S.I.; Müller, I.; Mannebach, S.; Endo, T.; Thiel, G. 2011. Signal transduction of pregnenolone sulfate in insulinoma cells. Activation of Egr-1 expression involving TRPM3, voltage-gated calcium channels, ERK, and ternary complex factors. *J. Biol. Chem.* **2011**, *286*, 10084–10096. [[CrossRef](#)]
- Kaufmann, A.; Keim, A.; Thiel, G. Regulation of immediate-early gene transcription following activation of G $\alpha$ q-coupled designer receptors. *J. Cell Biochem.* **2013**, *114*, 681–696. [[CrossRef](#)]
- Lesch, A.; Rössler, O.G.; Thiel, G. Extracellular signal-regulated protein kinase, c-Jun N-terminal protein kinase, and calcineurin regulate transient receptor potential M3 (TRPM3) induced activation of AP-1. *J. Cell Biochem.* **2017**, *118*, 2409–2419. [[CrossRef](#)]
- Duan, L.; Cobb, M.H. Calcineurin increases glucose activation of ERK1/2 by reversing negative feedback. *Proc. Nat. Acad. Sci. USA* **2010**, *107*, 22314–22319. [[CrossRef](#)]
- Backes, T.M.; Rössler, O.G.; Hui, X.; Grötzinger, C.; Lipp, P.; Thiel, G. Stimulation of TRPV1 channels activates the AP-1 transcription factor. *Biochem. Pharmacol.* **2018**, *150*, 160–169. [[CrossRef](#)]
- Rubil, S.; Lesch, A.; Mukaida, N.; Thiel, G. Stimulation of transient receptor potential M3 (TRPM3) channels increases interleukin-8 gene promoter activity involving AP-1 and extracellular signal-regulated protein kinase. *Cytokine* **2018**, *103*, 133–141. [[CrossRef](#)]
- Rubil, S.; Thiel, G. Stimulation of TRPM3 channels increases the transcriptional activation potential of Elk-1 involving cytosolic  $\text{Ca}^{2+}$ , extracellular signal-regulated protein kinase, and calcineurin. *Eur. J. Pharmacol.* **2019**, *844*, 225–230. [[CrossRef](#)]
- Thiel, G.; Backes, T.M.; Welck, J.; Steinhausen, S.; Fischer, A.-L.; Langfermann, D.S.; Ulrich, M.; Wissenbach, U.; Rössler, O.G. Pharmacological inhibition of TRPM8-induced gene transcription. *Biochem. Pharmacol.* **2019**, *170*, 113678. [[CrossRef](#)] [[PubMed](#)]
- Müller, I.; Endo, T.; Thiel, G. 2010 Regulation of AP-1 activity in glucose-stimulated insulinoma cells. *J. Cell Biochem.* **2010**, *110*, 1481–1494. [[CrossRef](#)]
- Thiel, G.; Lesch, A.; Keim, A. Transcriptional response to calcium-sensing receptor stimulation. *Endocrinology* **2012**, *153*, 4716–4728. [[CrossRef](#)]
- Samak, G.; Narayanan, D.; Jaggar, J.H.; Rao, R. CaV1.3 channels and intracellular calcium mediate osmotic stress-induced N-terminal c-Jun kinase activation and disruption of tight junctions in Caco-2 cell monolayers. *J. Biol. Chem.* **2011**, *286*, 30232–30243. [[CrossRef](#)] [[PubMed](#)]
- Chen, C.-Y.; Hour, M.-J.; Lin, W.-C.; Wong, K.-L.; Shiao, L.-R.; Cheng, K.-S.; Chan, P.; Leung, Y.-M. Antagonism of  $\text{Ca}^{2+}$ -sensing receptor by NPS 2143 is transiently masked by p38 activation in mouse brain bEND.3 endothelial cells. *Naunyn Schmiedeberg Arch. Pharmacol.* **2019**, *392*, 823–832. [[CrossRef](#)] [[PubMed](#)]
- Nakanishi, M.; Hata, K.; Nagayama, T.; Sakurai, T.; Nishisho, T.; Wakabayashi, H.; Hiraga, T.; Ebisu, S.; Yoneda, T. Acid activation of Trpv1 leads to an up-regulation of calcitonin gene-related peptide expression in dorsal root ganglion neurons via the CamK-CREB cascade: A potential mechanism of inflammatory pain. *Mol. Biol. Cell* **2010**, *21*, 2568–2577. [[CrossRef](#)]



21. Sun, P.; Enslin, H.; Myung, P.S.; Maurer, R.A. Differential activation of CREB by Ca<sup>2+</sup>/calmodulin-dependent protein kinases type II and type IV involves phosphorylation of a site that negatively regulates activity. *Genes Dev.* **1994**, *8*, 2527–2539. [[CrossRef](#)]
22. Gallin, W.J.; Greenberg, M.E. Calcium regulation of gene expression in neurons: The mode of entry matters. *Curr. Opin. Neurobiol.* **1995**, *5*, 367–374. [[CrossRef](#)]
23. Wagner, T.F.J.; Loch, S.; Lambert, S.; Straub, I.; Mannebach, S.; Mathar, I.; Düfer, M.; Lis, A.; Flockerzi, V.; Philipp, S.E.; et al. Transient receptor potential M3 channels are ionotropic steroid receptors in pancreatic beta cells. *Nat. Cell Biol.* **2008**, *10*, 1421–1430. [[CrossRef](#)] [[PubMed](#)]
24. Lesch, A.; Rubil, S.; Thiel, G. Activation and inhibition of transient receptor potential TRPM3-induced gene transcription. *Br. J. Pharmacol.* **2014**, *171*, 2645–2658. [[CrossRef](#)]
25. Gallo, E.M.; Cante-Barett, K.; Crabtree, G.R. Lymphocyte calcium signaling from membrane to nucleus. *Nat. Immunol.* **2006**, *7*, 25–32. [[CrossRef](#)] [[PubMed](#)]
26. Lin, Y.-P.; Bakowski, D.; Mirams, G.R.; Parekh, A.B. Selective recruitment of different Ca<sup>2+</sup>-dependent transcription factors by STIM-Orai channel cluster. *Nat. Commun.* **2019**, *10*, 2516. [[CrossRef](#)]
27. Dolmetsch, R.E.; Lewis, R.S.; Goodnow, C.C.; Healy, J.I. Differential activation of transcription factors induced by Ca<sup>2+</sup> response amplitude and duration. *Nature* **1997**, *386*, 855–858. [[CrossRef](#)]
28. Kar, P.; Parekh, A.B. Distinct spatial Ca<sup>2+</sup> signatures selectively activate different NFAT transcription factor isoforms. *Mol. Cell* **2015**, *58*, 232–243. [[CrossRef](#)] [[PubMed](#)]
29. Parekh, A.B.; Muallem, S. Ca<sup>2+</sup> signalling and gene regulation. *Cell Calcium* **2011**, *49*, 279. [[CrossRef](#)]
30. Sheng, M.; McFadden, G.; Greenberg, M.E. Membrane depolarization and calcium induce *c-fos* transcription via phosphorylation of transcription factor CREB. *Neuron* **1990**, *4*, 571–582. [[CrossRef](#)]
31. Müller, I.; Rössler, O.G.; Thiel, G. Pregnenolone sulfate activates basic region leucine zipper transcription factors in insulinoma cells: Role of voltage-gated Ca<sup>2+</sup> channels and transient receptor potential melastatin 3 channels. *Mol. Pharmacol.* **2011**, *80*, 1179–1189. [[CrossRef](#)] [[PubMed](#)]
32. Mayr, B.; Montminy, M. Transcriptional regulation by the phosphorylation-dependent factor CREB. *Nat. Rev. Mol. Cell Biol.* **2001**, *2*, 599–609. [[CrossRef](#)]
33. Johannessen, M.; Delghandi, M.P.; Moens, U. What turns CREB on? *Cell. Signal.* **2004**, *16*, 1211–1227. [[CrossRef](#)]
34. Barco, A.; Kandel, E.R. The Role of CREB and CBP in Brain Function. In *Transcription Factors in the Nervous System—Development, Brain Function, and Diseases*; Thiel, G., Ed.; Wiley-VCH Verlag: Weinheim, Germany, 2006; pp. 207–241.
35. Steven, A.; Friedrich, M.; Jank, P.; Heimer, N.; Budczies, J.; Denkert, C.; Selinger, B. What turns CREB on? And off? And why does it matter? *Cell. Mol. Life Sci.* **2020**, *77*, 4049–4067. [[CrossRef](#)] [[PubMed](#)]
36. Sharrocks, A.D. The ETS-domain transcription factor family. *Nat. Mol. Cell Biol.* **2001**, *2*, 827–837. [[CrossRef](#)] [[PubMed](#)]
37. Shaw, P.E.; Saxton, J. Ternary complex factors: Prime targets for mitogen-activated protein kinases. *Int. J. Biochem. Cell. Biol.* **2003**, *35*, 1210–1226. [[CrossRef](#)]
38. Cavigelli, M.; Dolfi, F.; Claret, F.X.; Karin, M. Induction of *c-fos* expression through JNK-mediated TCF/Elk-1 phosphorylation. *EMBO J.* **1995**, *14*, 5957–5964. [[CrossRef](#)]
39. Whitmarsh, A.J.; Yang, S.H.; Su, M.S.S.; Sharrocks, A.D.; Davis, R.J. Role of p38 and JNK mitogen-activated protein kinases in the activation of ternary complex factors. *Mol. Cell. Biol.* **1997**, *17*, 2360–2371. [[CrossRef](#)]
40. Yang, S.H.; Whitmarsh, A.J.; Davis, R.J.; Sharrocks, A.D. Differential targeting of MAP kinases to the ETS-domain transcription factor Elk-1. *EMBO J.* **1998**, *17*, 1740–1749. [[CrossRef](#)]
41. Cruzalegui, F.H.; Cano, E.; Treisman, R. ERK activation induces phosphorylation of Elk-1 at multiple S/T-P motifs to high stoichiometry. *Oncogene* **1999**, *18*, 7948–7957. [[CrossRef](#)]
42. Müller, M.R.; Rao, A. NFAT, immunity and cancer: A transcription factor comes of age. *Nat. Rev. Immunol.* **2010**, *10*, 645–656. [[CrossRef](#)]
43. Eder, A.; Bading, H. Calcium signals can freely cross the nuclear envelope in hippocampal neurons: Somatic calcium increases generate nuclear calcium transient. *BMC Neurosci.* **2007**, *8*, 57. [[CrossRef](#)] [[PubMed](#)]
44. Echevarría, W.; Leite, M.F.; Guerra, M.T.; Zipfel, W.R.; Nathanson, M. Regulation of calcium signals in the nucleus by a nucleoplasmic reticulum. *Nat. Cell Biol.* **2003**, *5*, 440–446. [[CrossRef](#)] [[PubMed](#)]
45. Kar, P.; Mirams, G.R.; Christian, H.C.; Parekh, A.B. Control of NFAT isoform activation and NFAT-dependent gene expression through two coincident and spatially segregated intracellular Ca<sup>2+</sup> signals. *Mol. Cell* **2016**, *64*, 746–759. [[CrossRef](#)]
46. Bading, H. Nuclear calcium signalling in the regulation of brain function. *Nat. Rev. Neurosci.* **2013**, *14*, 593–608. [[CrossRef](#)] [[PubMed](#)]
47. Hardingham, G.E.; Chawla, S.; Johnson, C.M.; Bading, H. Distinct functions of nuclear and cytoplasmic calcium in the control of gene expression. *Nature* **1997**, *385*, 260–265. [[CrossRef](#)]
48. Müller, I.; Lipp, P.; Thiel, G. Ca<sup>2+</sup> signaling and gene transcription in glucose-stimulated insulinoma cells. *Cell Calcium* **2012**, *52*, 137–151. [[CrossRef](#)] [[PubMed](#)]
49. Pusl, T.; Wu, J.J.; Zimmerman, T.L.; Zhang, L.; Ehrlich, B.E.; Berchtold, M.W.; Hoek, J.B.; Karpen, S.J.; Nathanson, M.H.; Bennett, A.M. Epidermal growth factor-mediated activation of the ETS domain transcription factor Elk-1 requires nuclear calcium. *J. Biol. Chem.* **2002**, *277*, 27517–27527. [[CrossRef](#)]

50. Arif, S.H. A  $\text{Ca}^{2+}$ -binding protein with numerous roles and uses: Parvalbumin in molecular biology and physiology. *BioEssays* **2009**, *31*, 410–421. [[CrossRef](#)]
51. Mayer, S.I.; Rössler, O.G.; Endo, T.; Charnay, P.; Thiel, G. Epidermal growth factor-induced proliferation of astrocytes requires Egr transcription factors. *J. Cell Sci.* **2009**, *122*, 3340–3350. [[CrossRef](#)]
52. Zhou, Y.; Trebak, M.; Gill, D.L. Calcium signals tune the fidelity of transcriptional responses. *Mol. Cell* **2015**, *58*, 197–199. [[CrossRef](#)]
53. Klee, C.B.; Ren, H.; Wang, X. Regulation of the calmodulin-stimulated protein phosphatase, calcineurin. *J. Biol. Chem.* **1998**, *273*, 13367–13370. [[CrossRef](#)]
54. Aramburo, J.; Rao, A.; Klee, C.B. Calcineurin: From structure to function. *Curr. Top. Cell. Reg.* **2000**, *36*, 237–295.
55. Rusnak, F.; Mertz, P. Calcineurin: Form and function. *Physiol. Rev.* **2000**, *80*, 1483–1521. [[CrossRef](#)] [[PubMed](#)]
56. Li, H.; Rao, A.; Hogan, P.G. Interaction of calcineurin with substrates and targeting proteins. *Trends. Cell Biol.* **2011**, *21*, 91–103. [[CrossRef](#)] [[PubMed](#)]
57. Hallhuber, M.; Burkhard, N.; Wu, R.; Buch, M.H.; Engelhardt, S.; Hein, L.; Neyes, L.; Schuh, K.; Ritter, O. Inhibition of nuclear import of calcineurin prevents myocardial hypertrophy. *Circ. Res.* **2006**, *99*, 626–635. [[CrossRef](#)] [[PubMed](#)]
58. Liu, J.; Farmer, J.D., Jr.; Lane, W.S.; Friedman, J.; Weissman, I.; Schreiber, S.L. Calcineurin is a common target of cyclophilin-cyclosporin A and FKBP-FK506 complexes. *Cell* **1991**, *66*, 807–815. [[CrossRef](#)]
59. Helekar, S.A.; Char, D.; Neff, S.; Patrick, J. Prolyl isomerase requirement for the expression of functional homo-oligomeric ligand-gated ion channels. *Neuron* **1994**, *12*, 179–189. [[CrossRef](#)]
60. Marks, A.R. Cellular functions of immunophilins. *Physiol. Rev.* **1996**, *76*, 631–649. [[CrossRef](#)] [[PubMed](#)]
61. Montero, M.; Lobatón, C.D.; Gutierrez-Fernández, S.; Moreno, A.; Alvarez, J. Calcineurin-independent inhibition of mitochondrial  $\text{Ca}^{2+}$  uptake by cyclosporin A. *Br. J. Pharmacol.* **2004**, *141*, 263–268. [[CrossRef](#)]
62. Bernardi, P.; Di Lisa, F. The mitochondrial permeability transition pore: Molecular nature and role as a target in cardioprotection. *J. Mol. Cell Cardiol.* **2015**, *78*, 100–106. [[CrossRef](#)]
63. Liddicoat, A.M.; Lavelle, E.C. Modulation of innate immunity by cyclosporine A. *Biochem. Pharmacol.* **2019**, *163*, 472–480. [[CrossRef](#)]
64. Arcas, J.M.; González, A.; Gers-Barlag, K.; González-González, O.; Bech, F.; Demirkhanyan, L.; Zakharian, E.; Belmonte, C.; Gomis, A.; Viana, F. The immunosuppressant macrolide tacrolimus activates cold-sensing TRPM8 channels. *J. Neurosci.* **2019**, *39*, 949–969. [[CrossRef](#)] [[PubMed](#)]
65. Fuentes, J.J.; Genescà, L.; Kingbury, T.J.; Cunningham, K.W.; Pérez-Riba, M.; Estivill, X.; de la Luna, S. DSCR1, overexpressed in Down syndrome, is an inhibitor of calcineurin-mediated signaling pathways. *Hum. Mol. Genet.* **2000**, *9*, 1681–1690. [[CrossRef](#)]
66. Lee, S.-K.; Ahnn, J. Regulator of calcineurin (RCAN): Beyond down syndrome critical region. *Mol. Cells* **2020**, *43*, 671–685. [[PubMed](#)]
67. Boss, V.; Talpade, D.J.; Murthy, T.J. Induction of NFAT-mediated transcription by  $\text{G}_q$ -coupled receptors in lymphoid and non-lymphoid cells. *J. Biol. Chem.* **1996**, *271*, 10429–10432. [[CrossRef](#)]
68. Langfermann, D.S.; Schmidt, T.; Rössler, O.G.; Thiel, G. Calcineurin controls gene transcription following stimulation of a  $\text{G}_q$ -coupled designer receptor. *Exp. Cell Res.* **2019**, *383*, 111553. [[CrossRef](#)] [[PubMed](#)]
69. Kim, M.-S.; Usachev, Y.M. Mitochondrial  $\text{Ca}^{2+}$  cycling facilitates activation of the transcription factor NFAT in sensory neurons. *J. Neurosci.* **2009**, *29*, 12101–12114. [[CrossRef](#)]
70. Crabtree, G.R. Calcium, calcineurin, and the control of transcription. *J. Biol. Chem.* **2001**, *276*, 2313–2316. [[CrossRef](#)] [[PubMed](#)]
71. Hogan, P.G.; Chen, L.; Nardone, J.; Rao, A. Transcriptional regulation by calcium, calcineurin, and NFAT. *Genes Dev.* **2003**, *17*, 2205–2232. [[CrossRef](#)]
72. Aramburo, J.; García-Cózar, F.; Raghavan, A.; Okamura, H.; Rao, A.; Hogan, P. Selective inhibition of NFAT activation by a peptide spanning the calcineurin targeting site of NFAT. *Mol. Cell* **1998**, *1*, 627–637. [[CrossRef](#)]
73. Zhu, J.; Shibasaki, F.; Price, R.; Guillemot, J.C.; Yano, T.; Dotsch, V.; Wagner, G.; Ferrara, P.; McKeon, F. Intramolecular masking of nuclear import signal on NF-AT<sub>4</sub> by casein kinase I and MEKK1. *Cell* **1998**, *93*, 851–861. [[CrossRef](#)]
74. Aramburo, J.; Yaffe, M.B.; López-Rodríguez, C.; Cantley, L.C.; Hogan, P.; Rao, A. Affinity-driven peptide selection of an NFAT inhibitor more selective than cyclosporin A. *Science* **1999**, *285*, 2129–2133. [[CrossRef](#)]
75. Hudry, E.; Wu, H.-Y.; Arbel-Ornath, M.; Hashimoto, T.; Matsouaka, R.; Fan, Z.; Spires-Jones, T.L.; Betensky, R.A.; Bacskai, B.J.; Hyman, B.T. Inhibition of the NFAT pathway alleviates amyloid beta neurotoxicity in a mouse model of Alzheimer’s disease. *J. Neurosci.* **2012**, *32*, 3176–3192. [[CrossRef](#)] [[PubMed](#)]
76. Shibasaki, F.; Price, E.R.; Milan, D.; McKeon, F. Role of kinases and the phosphatase calcineurin in the nuclear shuttling of transcription factor NF-AT4. *Nature* **1996**, *382*, 370–373. [[CrossRef](#)]
77. Kim, S.S.; Seo, S.R. The regulator of calcineurin 1 (RCAN1/DSCR1) activates the cAMP response element-binding protein (CREB) pathway. *J. Biol. Chem.* **2011**, *286*, 37841–37848. [[CrossRef](#)]
78. Bito, H.; Deisseroth, K.; Tsien, R.W. CREB phosphorylation and dephosphorylation: A  $\text{Ca}^{2+}$ - and stimulus duration-dependent switch for hippocampal gene expression. *Cell* **1998**, *87*, 1203–1214. [[CrossRef](#)]
79. Sreaton, R.A.; Conkright, M.D.; Katoh, Y.; Best, J.L.; Canettieri, G.; Jeffries, S.; Guzman, E.; Niessen, S.; Yates, J.R., III; Takemori, H.; et al. The CREB coactivator TORC2 functions as a calcium- and cAMP-sensitive coincidence detector. *Cell* **2004**, *119*, 61–74. [[CrossRef](#)] [[PubMed](#)]

80. Sugimoto, T.; Stewart, S.; Guan, K.-L. The calcium/calmodulin-dependent protein phosphatase calcineurin is the major Elk-1 phosphatase. *J. Biol. Chem.* **1997**, *272*, 29415–29418. [[CrossRef](#)]
81. Tian, J.; Karin, M. Stimulation of Elk1 transcriptional activity by mitogen-activated protein kinases is negatively regulated by protein phosphatase 2B (calcineurin). *J. Biol. Chem.* **1999**, *274*, 15173–15180. [[CrossRef](#)]
82. Lam, B.Y.H.; Zhang, W.; Enticknap, N.; Haggis, E.; Cader, M.Z.; Chawla, S. Inverse regulation of plasticity-related immediate early genes by calcineurin in hippocampal neurons. *J. Biol. Chem.* **2009**, *284*, 12562–12571. [[CrossRef](#)] [[PubMed](#)]
83. Bernal-Mizrachi, E.; Cras-Méneur, C.; Ye, B.R.; Johnson, J.D.; Permutt, M.A. Transgenic overexpression of active calcineurin in  $\beta$ -cells results in decreased  $\beta$ -cell mass and hyperglycemia. *PLoS ONE* **2010**, *5*, e11969. [[CrossRef](#)]
84. Lesch, A.; Backes, T.M.; Langfermann, D.S.; Rössler, O.G.; Laschke, M.W.; Thiel, G. Ternary complex factor regulates pancreatic islet size and blood glucose homeostasis in transgenic mice. *Pharmacol. Res.* **2020**, *159*, 104983. [[CrossRef](#)] [[PubMed](#)]
85. Müller, I.; Rössler, O.G.; Wittig, C.; Menger, M.D.; Thiel, G. Critical role of Egr transcription factors in regulating insulin biosynthesis, blood glucose homeostasis and islet size. *Endocrinology* **2012**, *153*, 3040–3053. [[CrossRef](#)] [[PubMed](#)]